

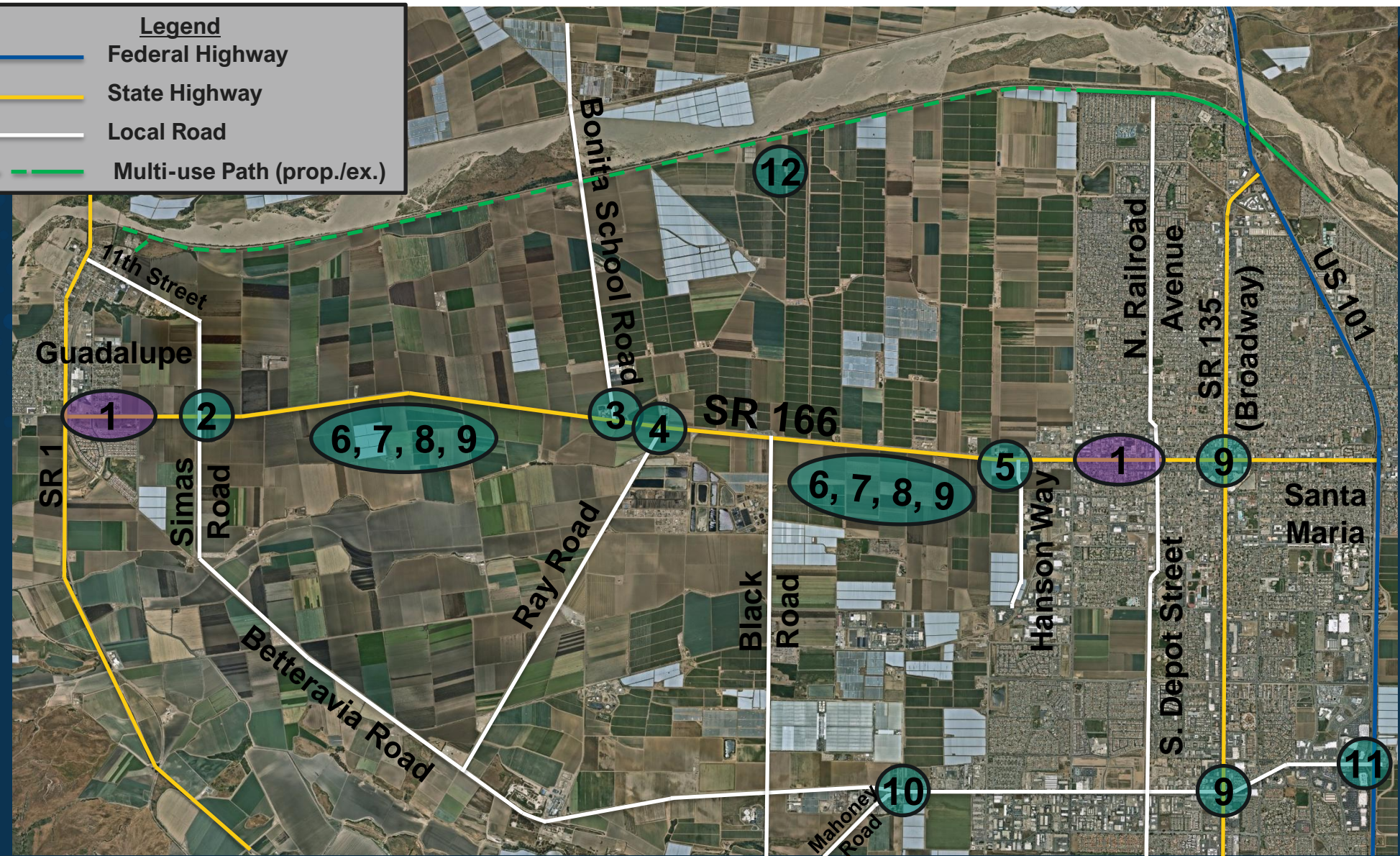
IMPROVEMENT CONCEPTS



SR 166 Comprehensive Corridor Plan **Improvements Overview**

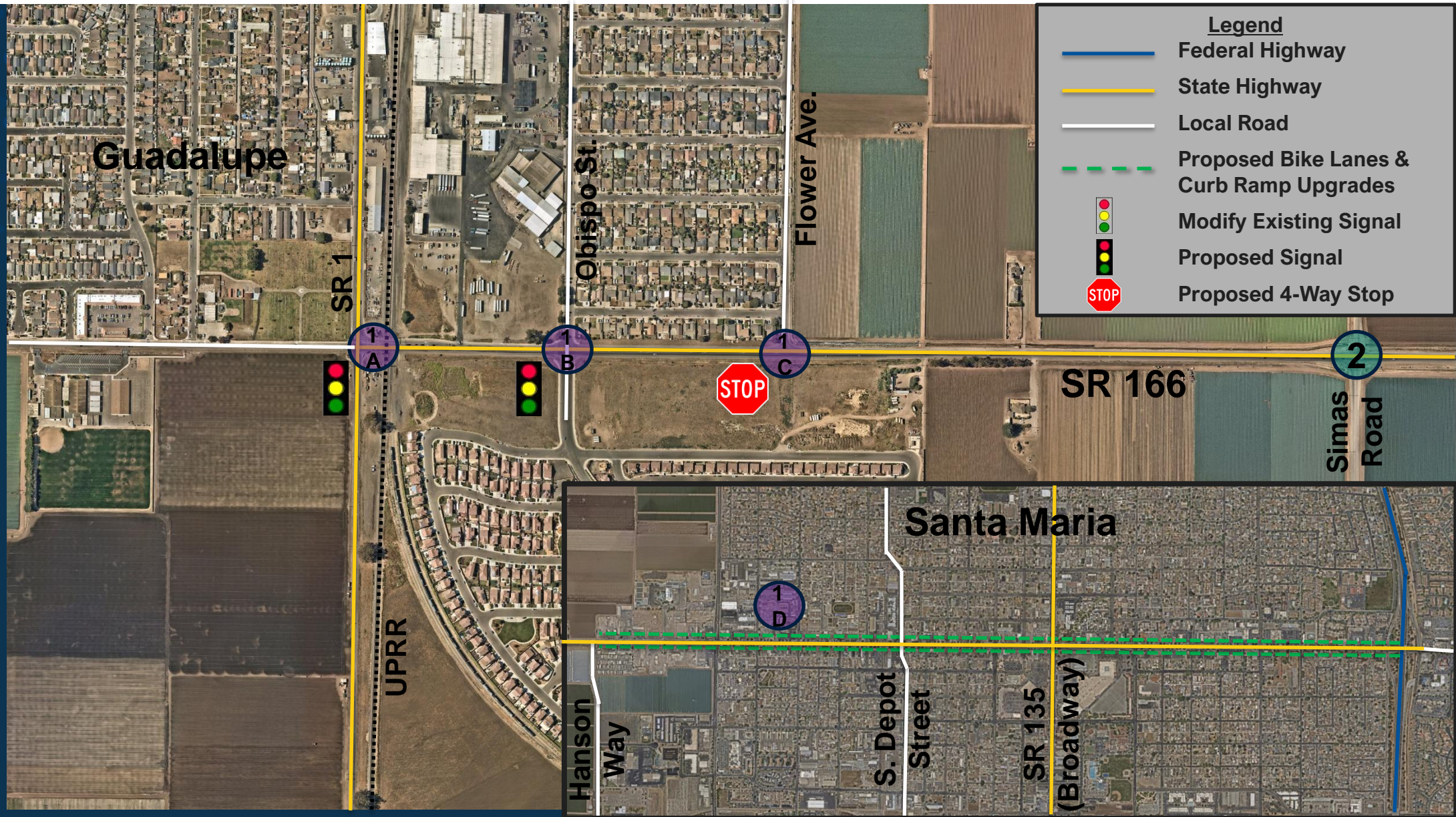
Legend

- Federal Highway
- State Highway
- Local Road
- Multi-use Path (prop./ex.)



- 1** GAPS/CAPM (Caltrans)
 - 2** Simas Road
 - 3** Bonita School Road
 - 4** Ray Road
 - 5** Hanson Road
 - 6** Driveway Pavement
 - 7** Enhanced Lighting
 - 8** Ridershare/Transit
 - 9** Safety/Truck Improvements
 - 10** Betteravia/ Mahoney Intersection
 - 11** Betteravia/US 101 Intersection
 - 12** Santa Maria River Trail
- Ellipses signify corridor-wide improvements

#1) Mainline Improvements – Caltrans GAPS/CAPM Project



#2) SR 166 Mainline Improvements – Simas Road



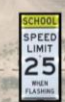
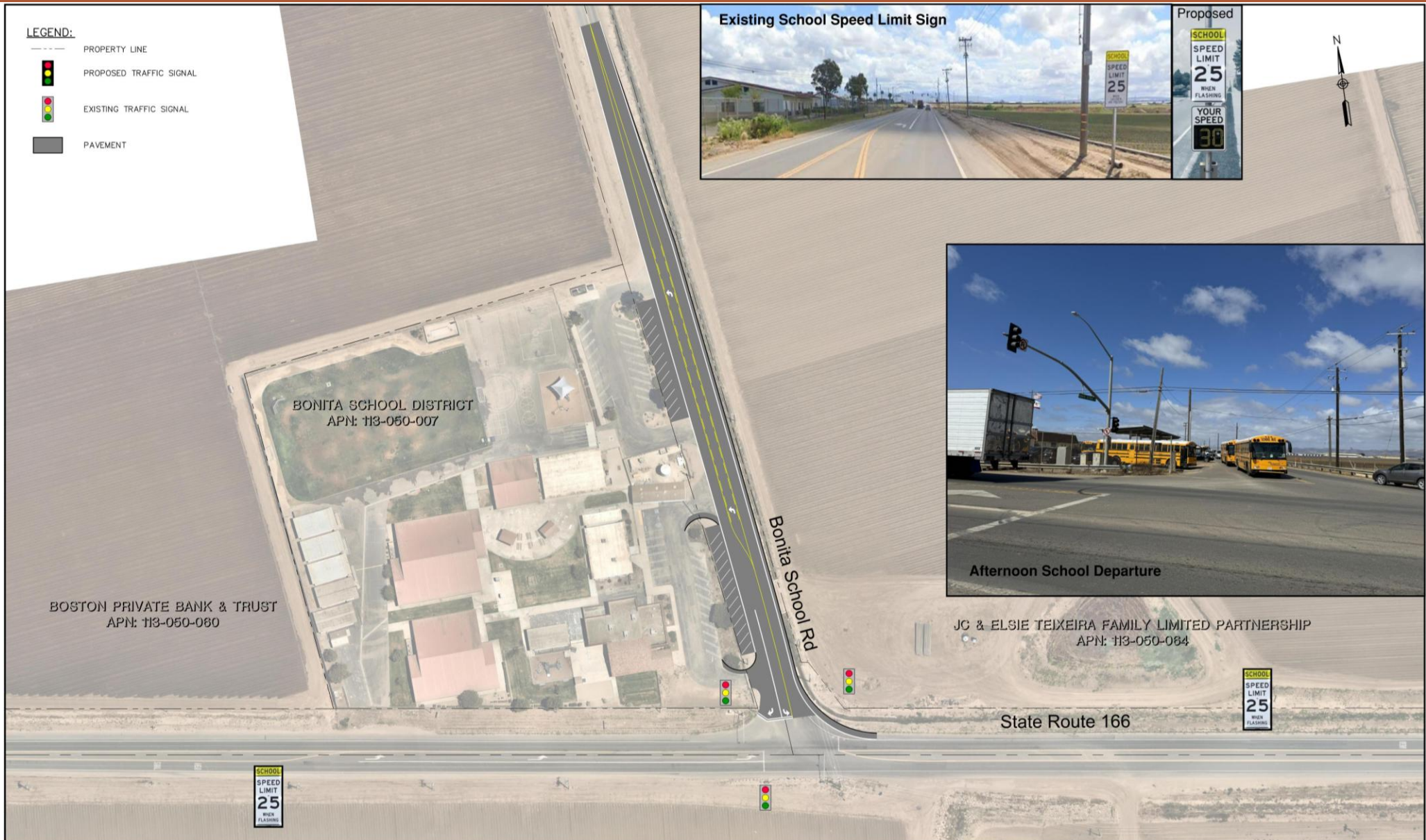
SR 166
COMPREHENSIVE
CORRIDOR STUDY
Guadalupe to Santa Maria



#3) SR 166 Mainline Improvements – Bonita School Rd



SR 166
 COMPREHENSIVE
 CORRIDOR STUDY
 Guadalupe to Santa Maria



#4) SR 166 Mainline Improvements – Ray Road



SR 166
COMPREHENSIVE
CORRIDOR STUDY
Guadalupe to Santa Maria



#5) SR 166 Mainline Improvements – Hanson Way



SR 166
COMPREHENSIVE
CORRIDOR STUDY
Guadalupe to Santa Maria

LEGEND:

- PROPERTY LINE
- PROPOSED TRAFFIC SIGNAL
- EXISTING TRAFFIC SIGNAL
- PAVEMENT



#6) SR 166 Mainline Improvements – Paved Driveway Aprons



 Existing Paved Driveway



 Potential Apron Pavement - Permitted Driveways Only





#7) SR 166 Mainline Improvements

- Enhanced Lighting & Visibility



Lighting & Visibility Improvements

-  Existing Street Lights
-  Proposed Street Lights
- Reflective Delineators

#8) SR 166 Comprehensive Corridor Plan

Rideshare Transit Options

CalVans



- Purchase 15 additional CalVans
- CalVans currently in operation between Santa Maria and Guadalupe
- Agricultural worker shuttle vans
- Drop off/pick up at varying fields
- Available during early morning hours

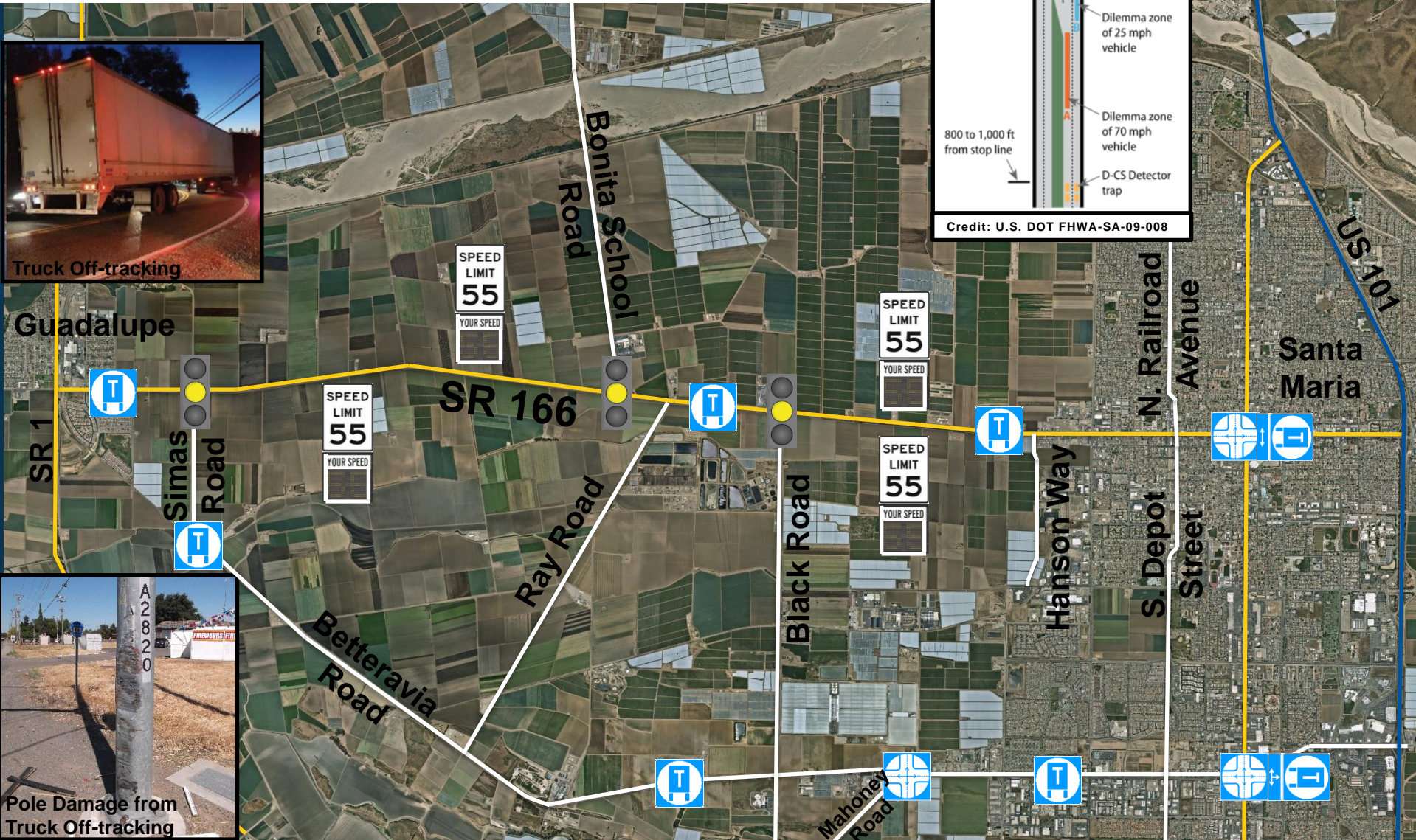
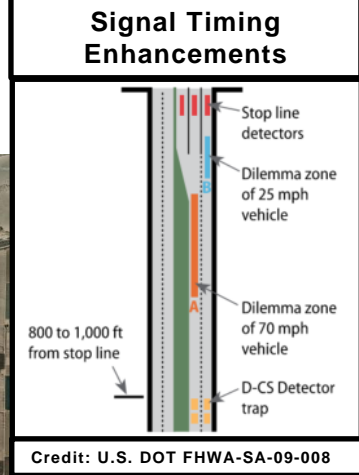
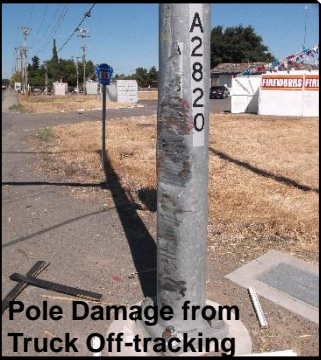
SMRT



- SMRT to assume Guadalupe Flyer service line
- Purchase one additional bus to increase service frequency between Santa Maria and Guadalupe from 60 minutes to 30 minutes

#9) SR 166 Comprehensive Corridor Plan

Safety & Truck Improvements



Speed Feedback Signs



Signal Timing Safety Enhancements



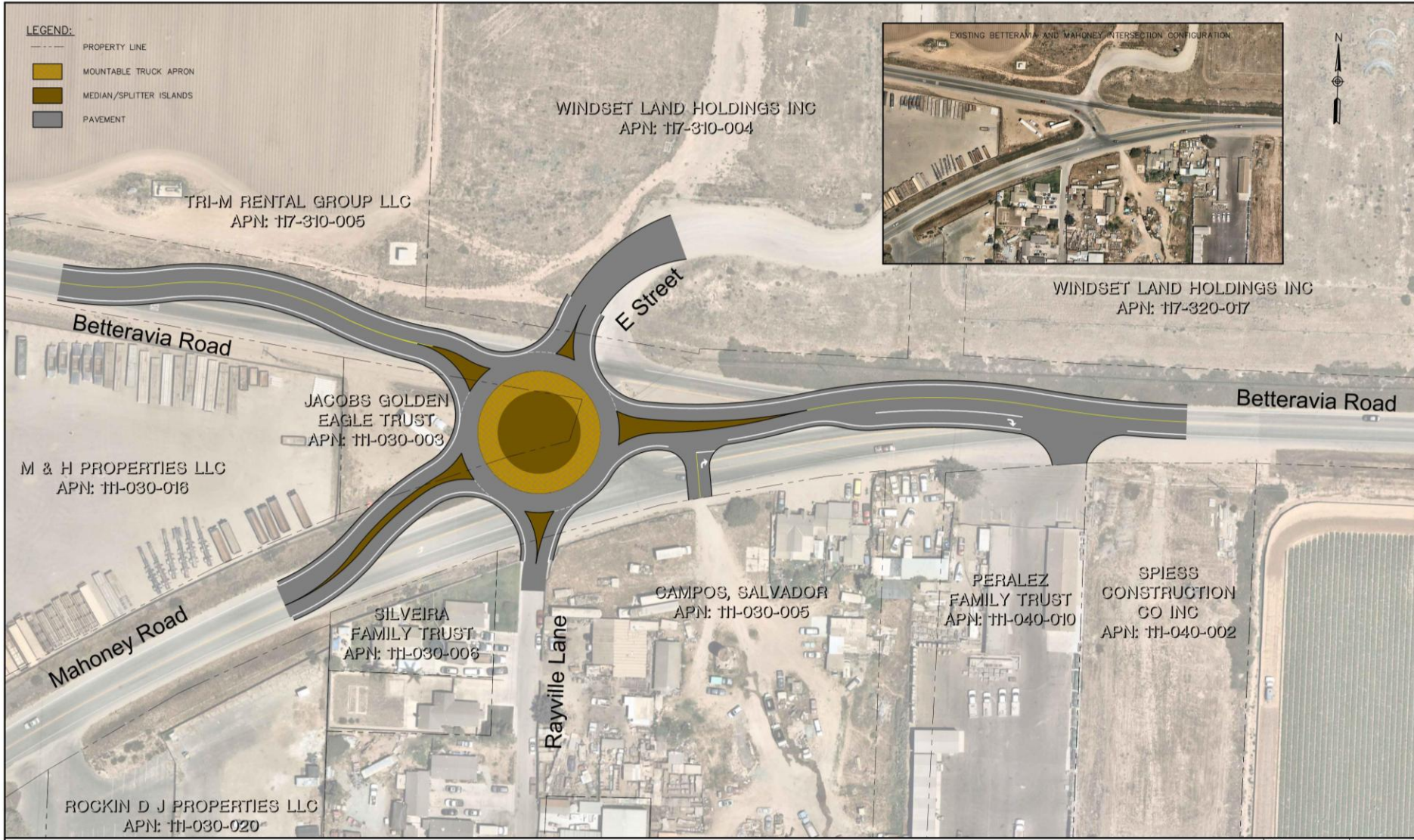
Potential Enhanced Truck Route



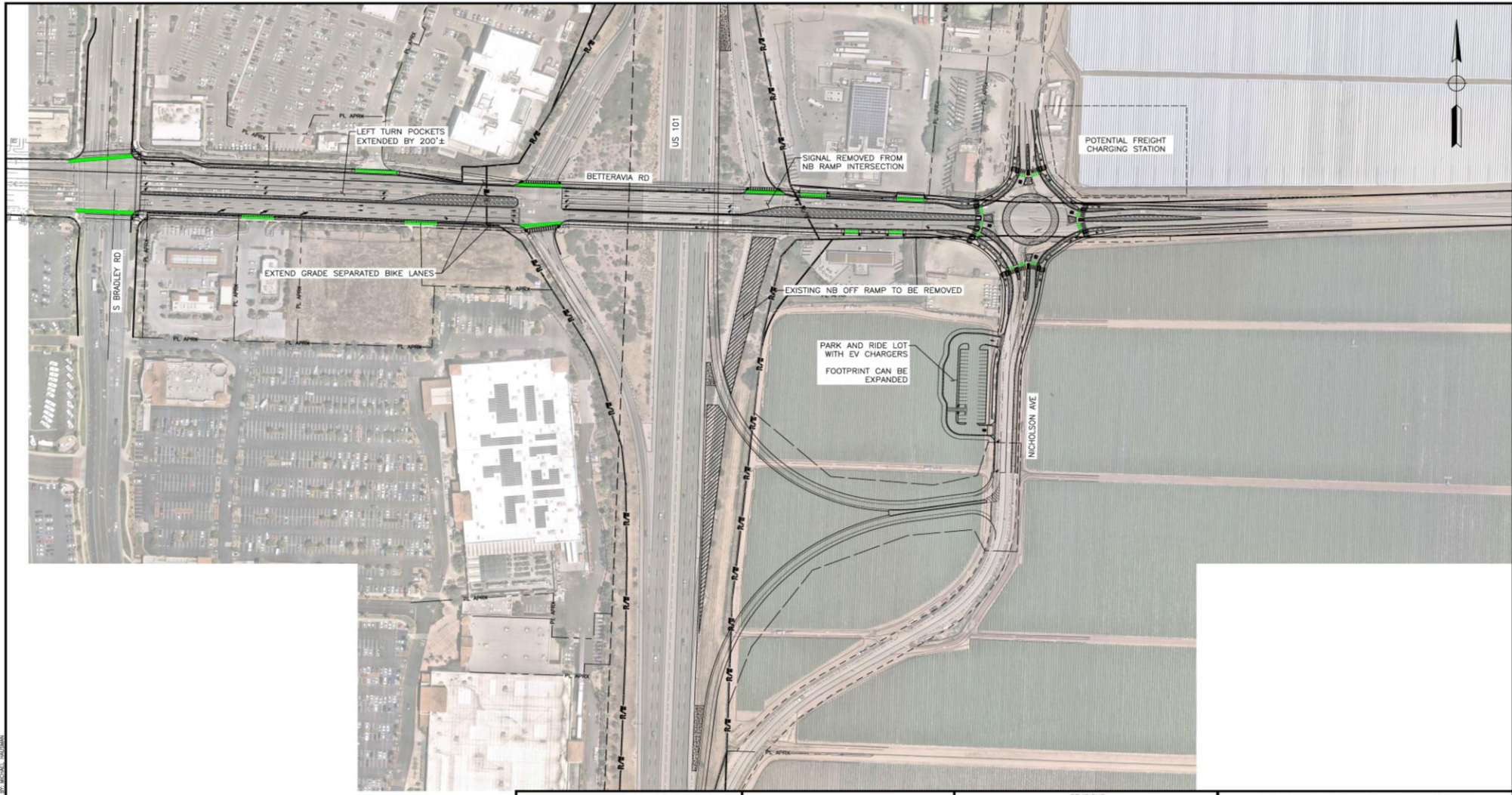
Truck Route Intersection Safety Upgrades

#10) SR 166 Parallel Improvements

Betteravia/Mahoney Intersection



#11) SR 166 Parallel Improvements Betteravia/US101 Interchange



DATE PLOTTED: 4/10/2025 10:41 AM BY: MICHAEL M. MCGUIRE



CITY OF SANTA MARIA
110 SOUTH PINE STREET, SUITE 221
SANTA MARIA, CA 93458

SCALE: HORIZ: 1" = 100'
VERT: N/A
ORIGINAL SCALE & INCHES FOR REDUCED PLANS



WALLACE GROUP
CIVIL AND TRANSPORTATION ENGINEERS
CONSTRUCTION MANAGEMENT
LANDSCAPE ARCHITECTURE
MECHANICAL ENGINEERING
PLANNING
PUBLIC WORKS ADMINISTRATION
SURVEYING / GIS SOLUTIONS
WATER RESOURCES
612 CLARION COURT
SAN LUIS OBISPO, CA 93401
T: 805.544.4021 F: 805.544.4028
www.wallacegroup.com

PROJECT ENGINEER
PLANS APPROVAL DATE



NO.		BY	DATE	DESCRIPTION	APPROVED BY	DATE

ACCEPTED BY THE CITY CAPITAL PROJECTS ENGINEER

US 101 - BETTERAVIA ROAD INTERCHANGE
LAYOUT EXHIBIT

DESIGNED BY: M.J.H. DRAWN BY: M.J.H. CHECKED BY: JA. JOB NUMBER: 585-0041. DATE: 4/10/2025. SHEET OF: 1 OF 1.

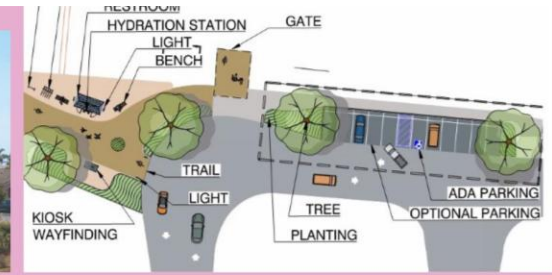
EX-1

#12) Parallel Improvements Santa Maria River Levee Trail



SR 166
 COMPREHENSIVE
 CORRIDOR STUDY
 Guadalupe to Santa Maria

santa maria river levee trail



Project Status:

The County of Santa Barbara is in the process of studying the alignment and creating an Environmental Impact Report (EIR) for the project. The EIR Scoping Meeting occurred in September 2024 and the meeting recording can be viewed online at countyofsb.org/3467/Active-Transportation

Project Goals:

- Establish a 6.7-mile multi-use path along the Santa Maria River
- Connects to the existing 2.7-mile Tom Urbanske Trail in north Santa Maria
- Closes a major gap in the active transportation network in the Santa Maria Valley
- Creates a safe and comfortable connection between the cities of Santa Maria and Guadalupe.
- Provide a safe and low-stress alternative to Highway 166 for active commuting and recreation.

Project History:

In May 2022, the County of Santa Barbara completed the Santa Maria River Levee Trail Study and presented it to the County Board of Supervisors. The County Board of Supervisors voted 5-0 to continue work on the proposed trail and allocated funding for additional survey, design, and environmental work related to the trail.

LEGEND

N	Trail Alignment	City Boundaries
	Caltrans Highways	Trail Access Point