

CENSUS 2020

SUMMARY:

INITIAL ANALYSIS OF THE CENSUS 2020 REDISTRICTING FILE FOR THE
SANTA BARBARA COUNTY REGION



November 2021

Introduction

As its role as a State Census Data Affiliate Center, SBCAG is providing a summary of the 2020 Census data released on August 12th, referred to as the redistricting file. This file is a limited release that includes population for cities and unincorporated areas, and counts of housing units, vacant units, race and Hispanic Origin, and age over 18. The release date for the Demographic and Housing Characteristics File (DHC) containing, additional detail from the 2020 Census will occur in 2022. The Census Bureau will release detailed data from the American Community Survey in December that includes age, gender, income, and household relationship etc. Urban area delineations and population counts will be released in 2023. SBCAG will report on future data releases as warranted.

A summary of the Census 2020 Redistricting Data includes the following:

- The Census 2020 population of Santa Barbara County is 448,229 persons, increasing by 5.7 percent or 24,334 persons over the 2010 to 2020 period.
- The proportion of Santa Barbara County's population relative to the state population has declined since 1970 from 1.32 to 1.13 percent. For programs that rely on population to distribute funds, a lower percentage represents a smaller proportion of Statewide population and potential funding.
- The unincorporated county population of 140,115 persons is the largest population relative to other jurisdictions and increased by 6,700 persons from 2010 to 2020.
- The City of Santa Maria showed the largest population growth in the County over the ten-year period increasing by 10,154 persons. The City of Goleta experienced the largest population growth in the South Coast with a 2,802 person increase.
- The cities of Solvang and Guadalupe experienced the largest percentage population increase between 2010 and 2020 with an increase of 16.8 percent and 13.8 percent, respectively. The City of Santa Barbara experienced the smallest percent increase of 0.3 percent.
- The unincorporated county has the largest share of countywide population with 31 percent. The City of Santa Maria follows with 25 percent and has the largest share relative to other incorporated jurisdictions.
- The North County share of countywide population is 54 percent, or 239,868 persons increasing from 52 percent in 2010.
- Eastern Goleta Valley is a newly designated place resulting in the first official Census population estimate of 28,656 persons. Isla Vista and UCSB have also been redefined for the 2020 Census resulting in estimates of 28,656 and 9,710 persons, respectively.
- The communities of Summerland and Montecito experienced population declines between 2010 and 2020.
- The largest numerical increase in housing units from 2010 to 2020 occurred in the City of Santa Maria with 1,666 new units followed by the City of Goleta with 1,170 new units.

- The City of Guadalupe has the highest household size in the county with 3.91 followed by the City of Santa Maria with a household size of 3.76.
- Over the 2010 to 2020 period the countywide ratio of population to housing unit growth was 4.5 persons per unit.
- The countywide proportion of the Hispanic/Latino population in 2020 is 47 percent, an increase of 4.1 percent from 2010.

Table of Contents

County Population Growth 1

County Population Growth Comparisons..... 2

Population Growth by Jurisdiction..... 5

Census County Divisions 10

Census Designated Places..... 12

Housing Units..... 17

Vacant Units 18

Group Quarters Population 19

Household Size..... 21

Ratio of Housing Units to Population Growth..... 22

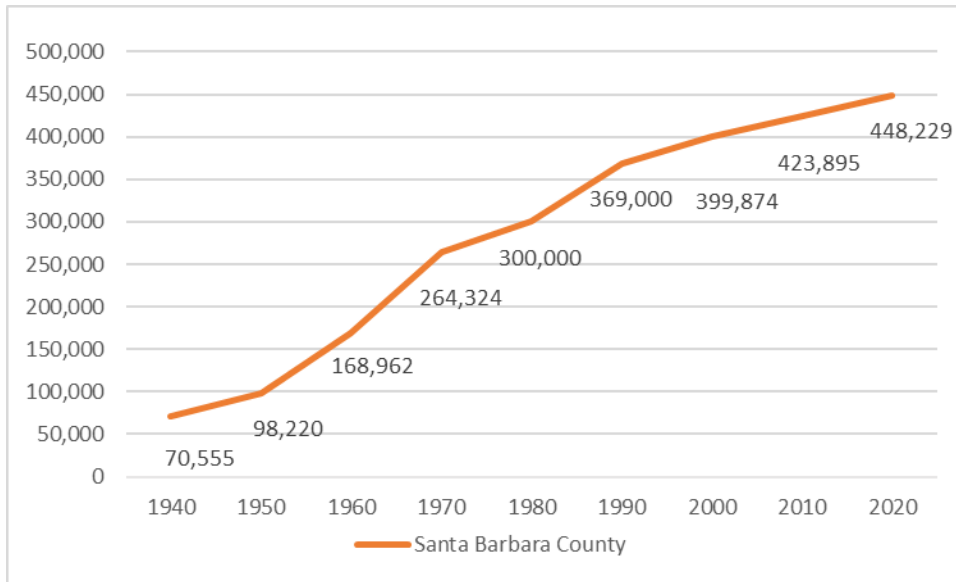
Race and Hispanic Origin..... 23

Urbanized Area 27

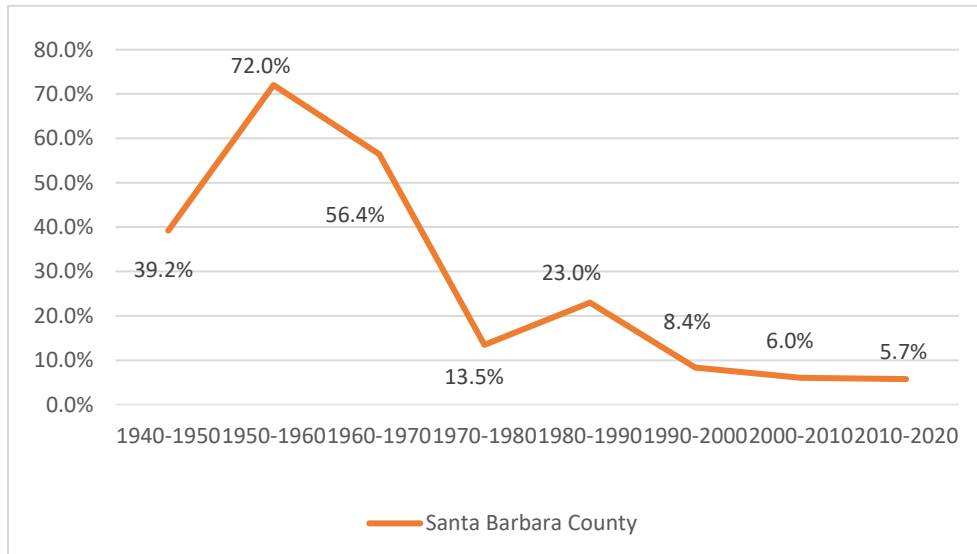
County Population Growth

The Census 2020 population for Santa Barbara County is 448,229 persons, increasing by 5.7 percent or 24,334 persons over the 2010 to 2020 period. This is compared to an increase of 6.0 percent or 24,548 persons for the prior ten-year period.

Santa Barbara County Population, 1940-2020



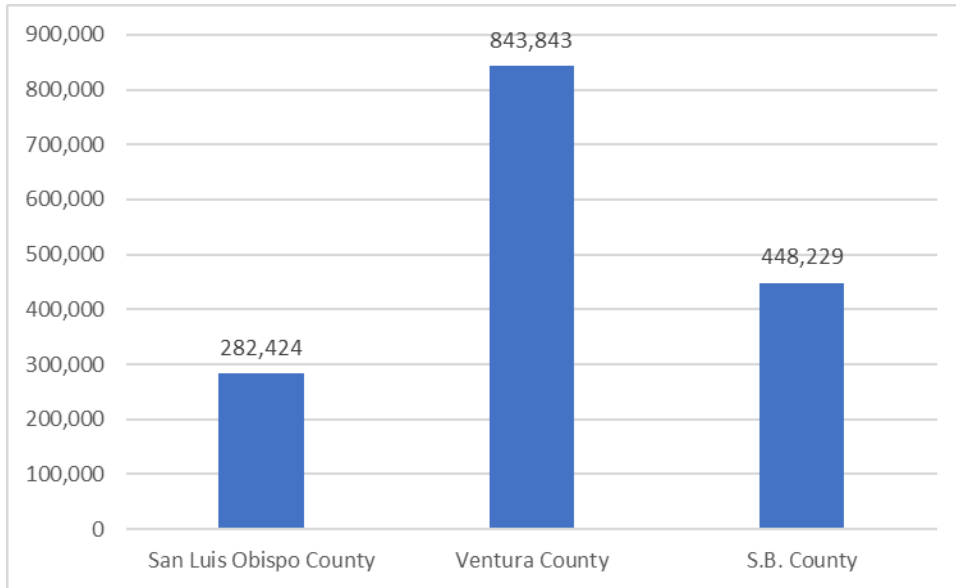
Santa Barbara County Population Change (%), 1940-2020



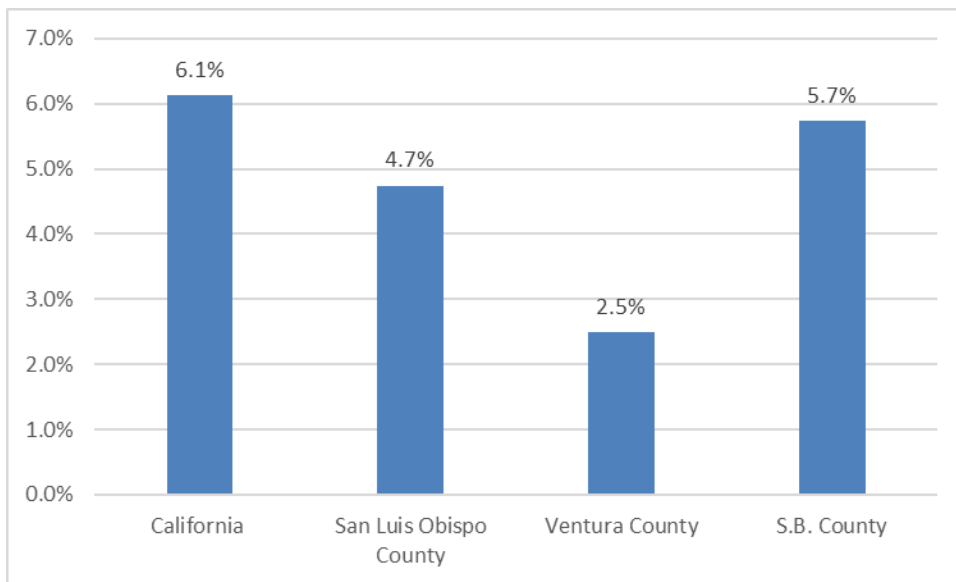
County Population Growth Comparisons

Relative to adjacent counties and the State, the 2010-2020 percentage of population growth in Santa Barbara County was marginally higher than Ventura and San Luis Obispo counties and similar to statewide growth.

Tri-County Population, 2020

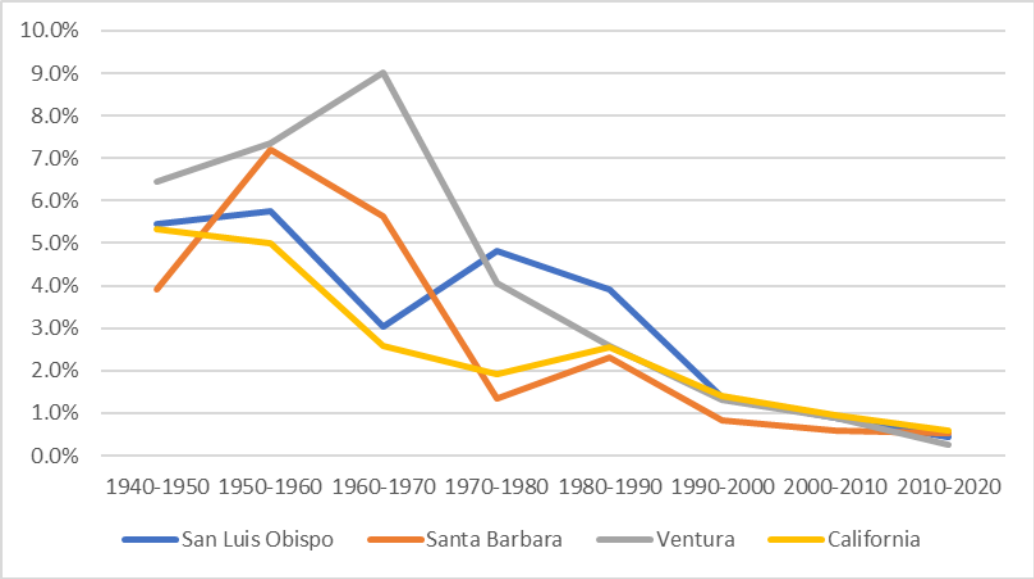


State and Tri-County Population Change (%), 2010-2020

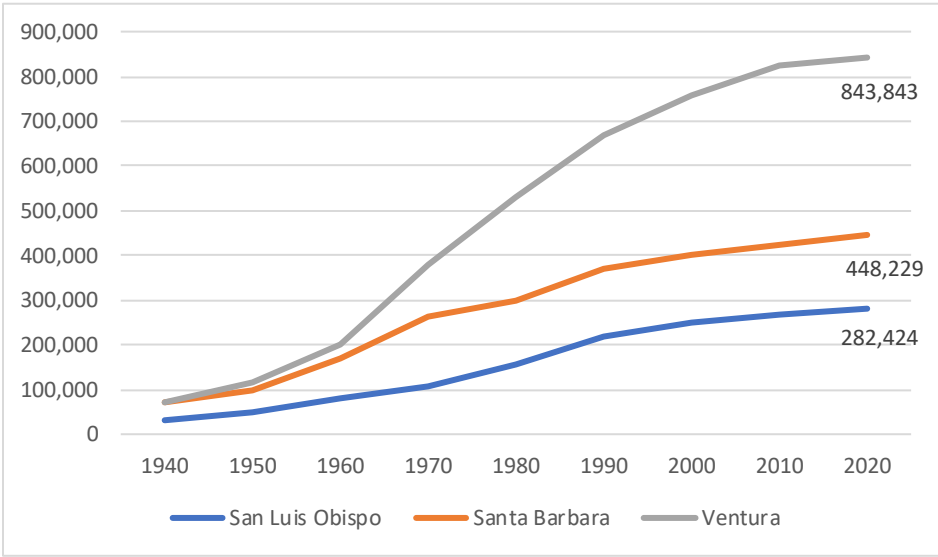


The annual rate of population growth has been declining for the State and adjacent counties since the 1960's when it peaked at an annual rate of five to nine percent. Growth is now less than one percent annually for the most recent 2010-2020 period, adding between 15,000 and 25,000 persons each to Santa Barbara and the adjacent counties.

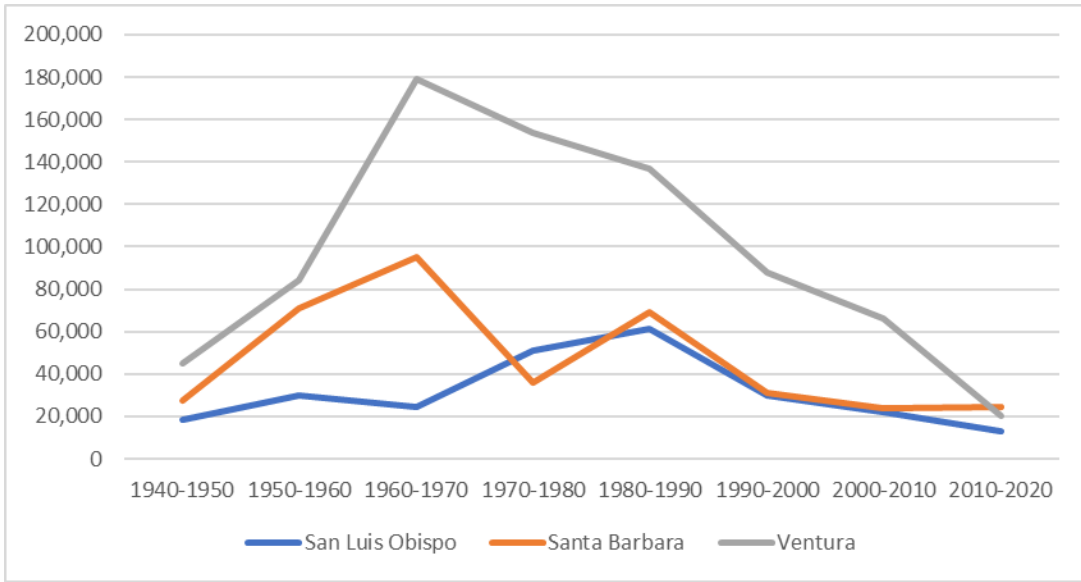
Tri-County and State Annual Average Change (%), 1940-2020



Tri-County Population, 1940-2020

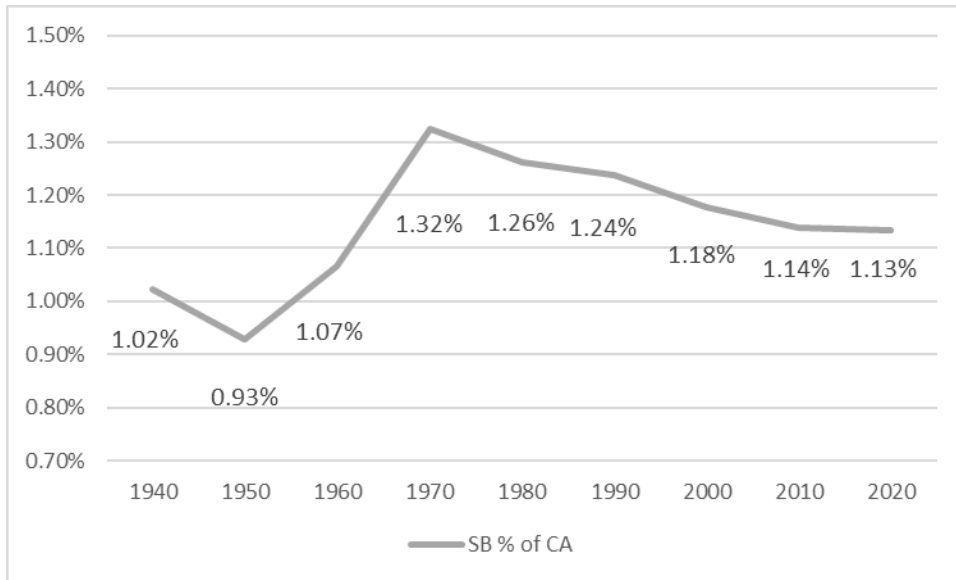


Tri-County Population Change (#), 1940-2020



California's population in 2020 is 39,538,223 persons. The proportion of Santa Barbara County's population relative to the statewide population has declined since 1970 from 1.32 percent to 1.13 percent. For programs that rely on population to distribute funds, a lower percentage represents a smaller proportion of Statewide population and potential funding.

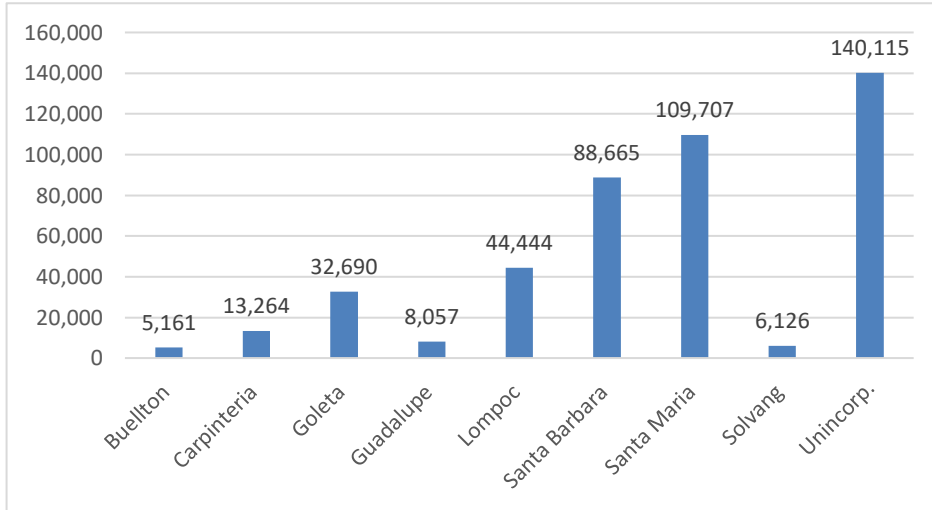
Santa Barbara County Share of Statewide Population (%), 1940-2020



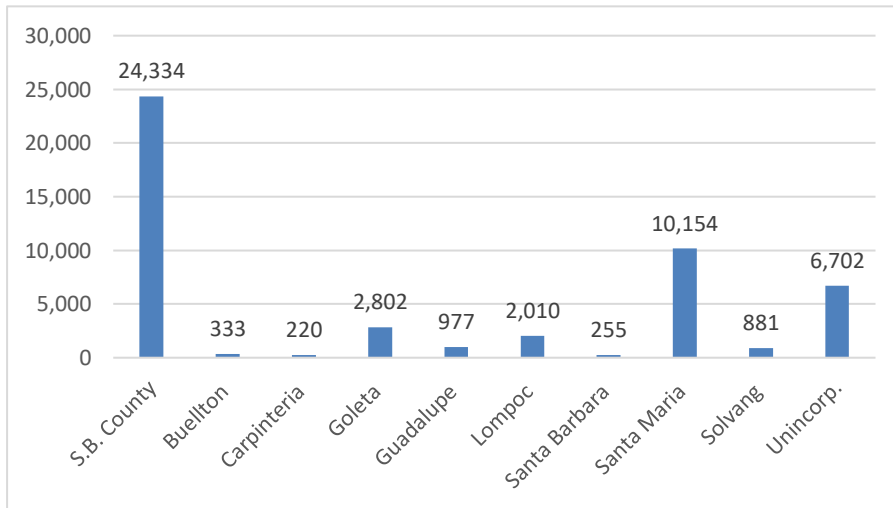
Population Growth by Jurisdiction

The unincorporated county population of 140,115 persons is the largest population relative to other jurisdictions and increased by 6,700 persons from 2010 to 2020. The cities of Santa Maria and Santa Barbara follow with the second and third largest populations, 109,707 and 88,665 persons, respectively. The City of Santa Maria showed the largest population growth in the county over the ten-year period increasing by 10,154 persons. The City of Goleta experienced the largest population growth in the South Coast subregion, 2,802 persons.

Jurisdictional Population, 2020

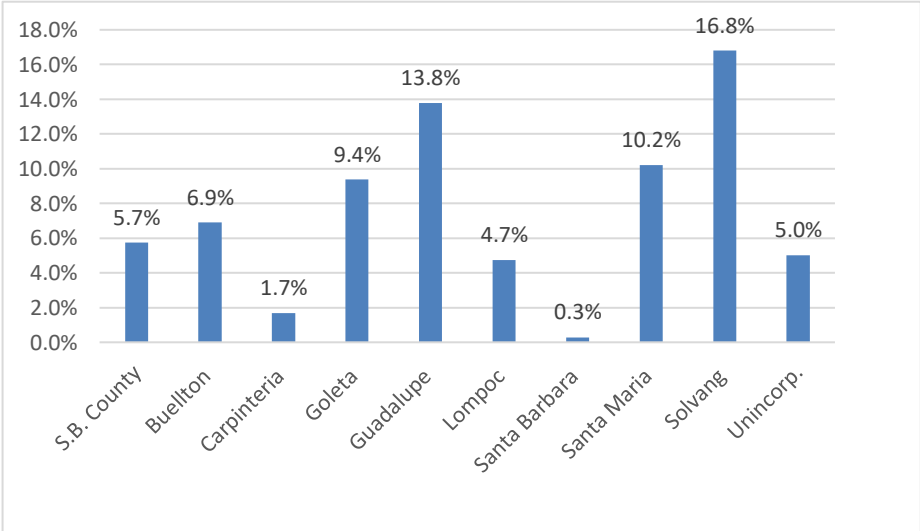


Jurisdictional Population Change (#), 2010-2020



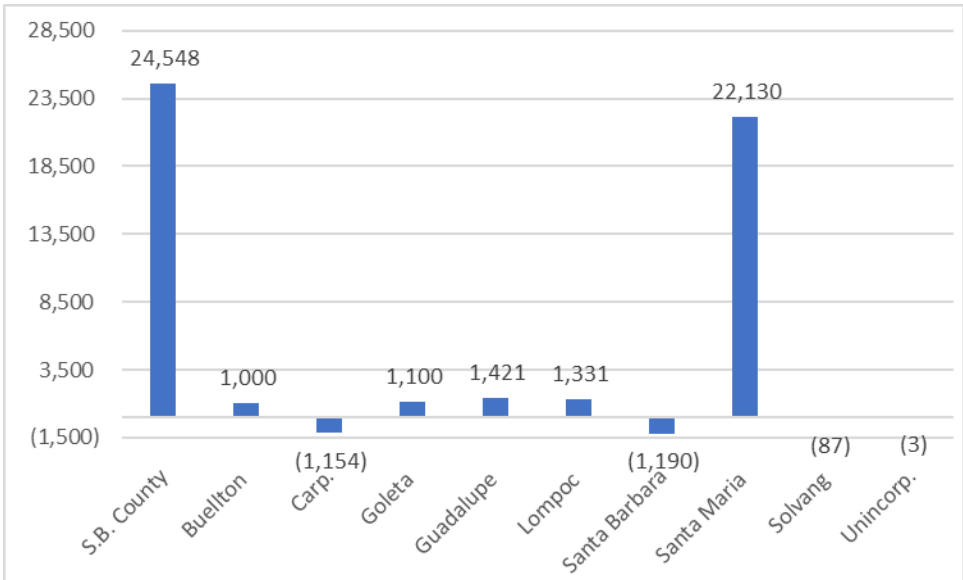
From 2010 to 2020, the cities of Solvang and Guadalupe experienced the largest percentage population increase of 16.8 percent and 13.8 percent, respectively. The City of Santa Barbara experienced the smallest percent increase at 0.3 percent.

Jurisdictional Population Change (%), 2010-2020

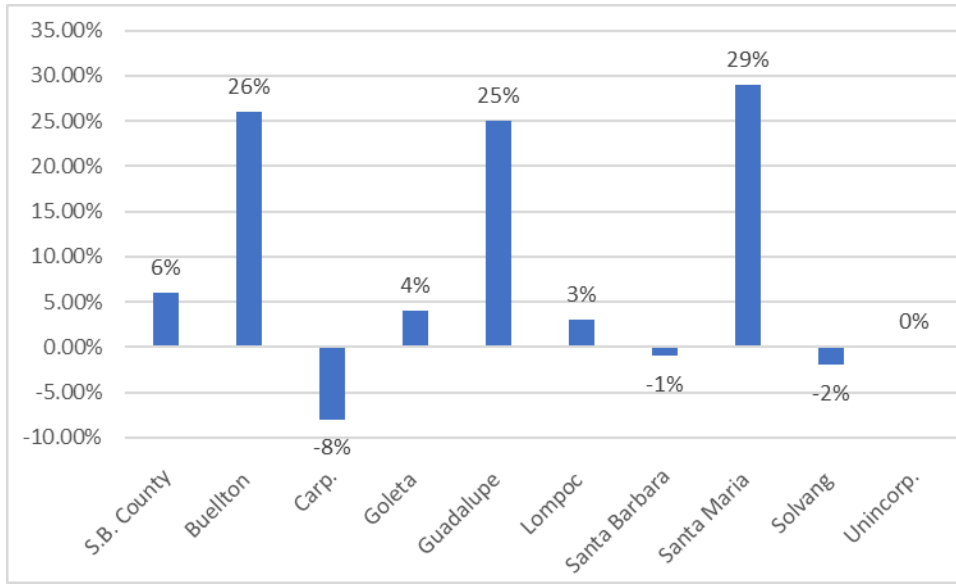


In contrast, during the prior 2000 to 2010 period, the City of Santa Maria experienced both the largest percentage and numeric increase in population with 29 percent and 22,130 persons. The population of the cities of Buellton and Guadalupe increased by 26 and 25 percent, respectively. The cities of Carpinteria and Santa Barbara experienced population declines of -8 and -1 percent, respectively.

Jurisdictional Population Change (#), 2000-2010

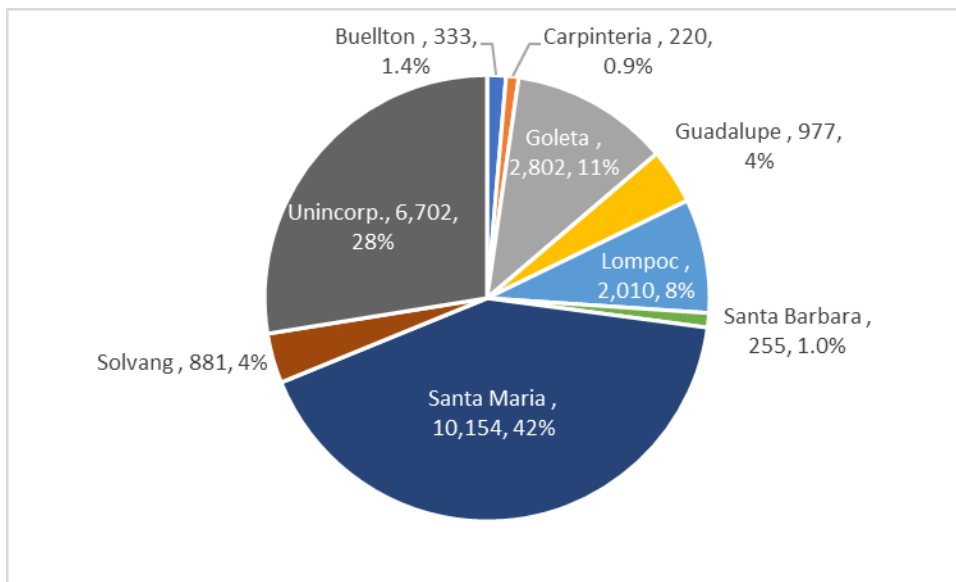


Jurisdictional Population Change (%), 2000-2010

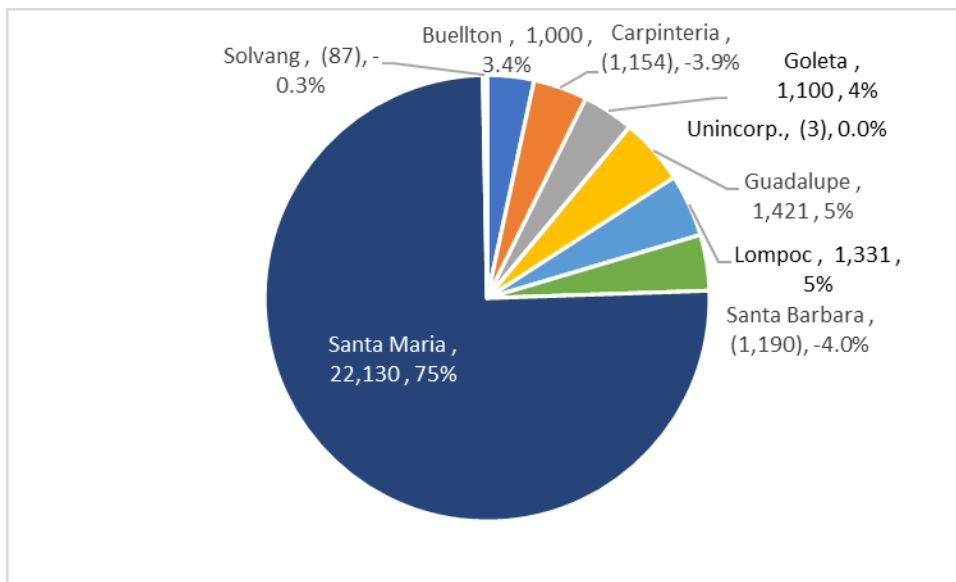


The City of Santa Maria accounted for 42 percent of countywide population growth from 2010 to 2020, down from 90 percent of the county’s growth from 2000 to 2010. The unincorporated population growth accounted for 28 percent of countywide growth compared to virtually no change in the unincorporated area population over the 2000 to 2010 period.

Percent of Countywide Growth, 2010-2020

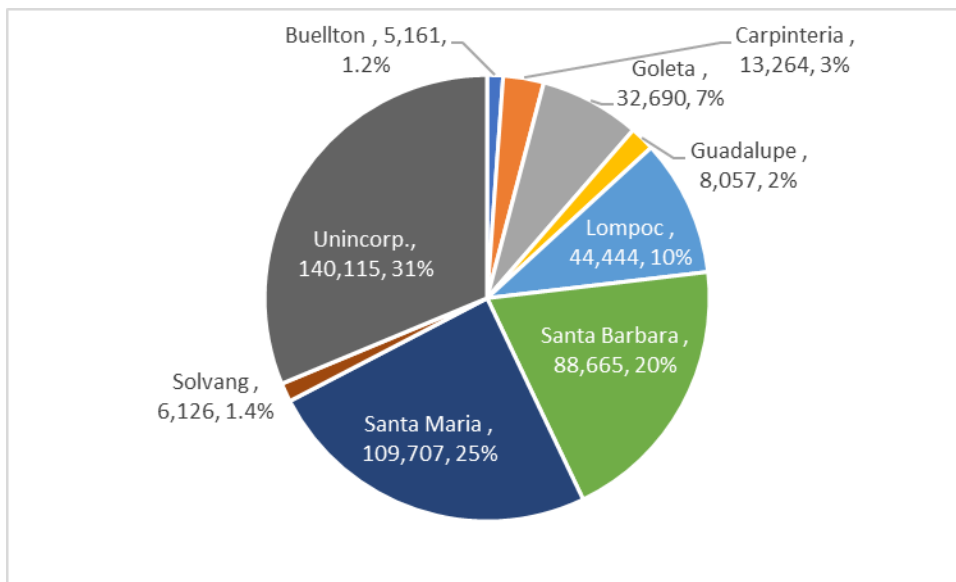


Percent of Countywide Growth, 2000-2010

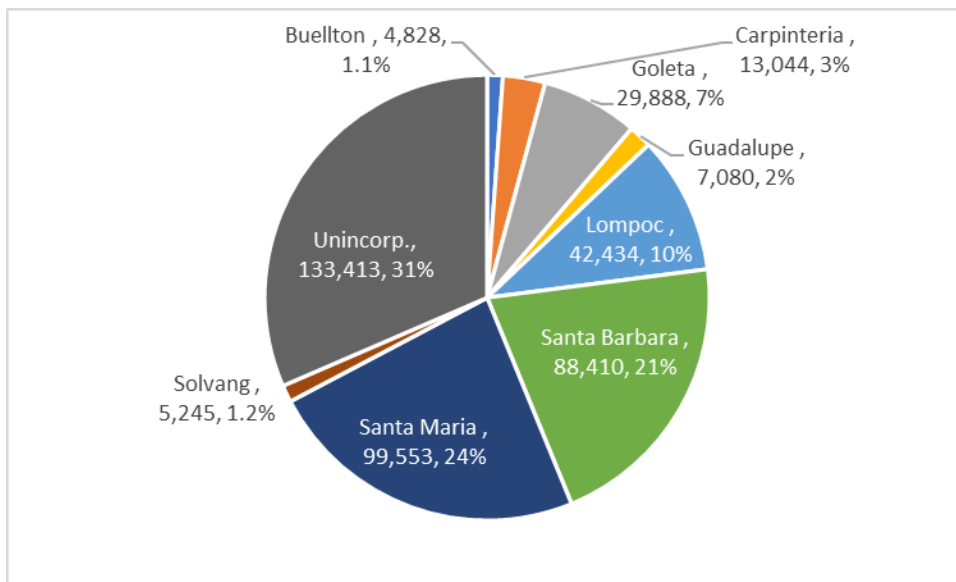


The unincorporated county has the largest share of countywide population with 31 percent. The City of Santa Maria follows with 25 percent. These proportions have changed slightly since 2010 with the City of Santa Maria increasing by one percent and the City of Santa Barbara decreasing by one percent over the ten-year period.

Percent of Countywide Population, 2020



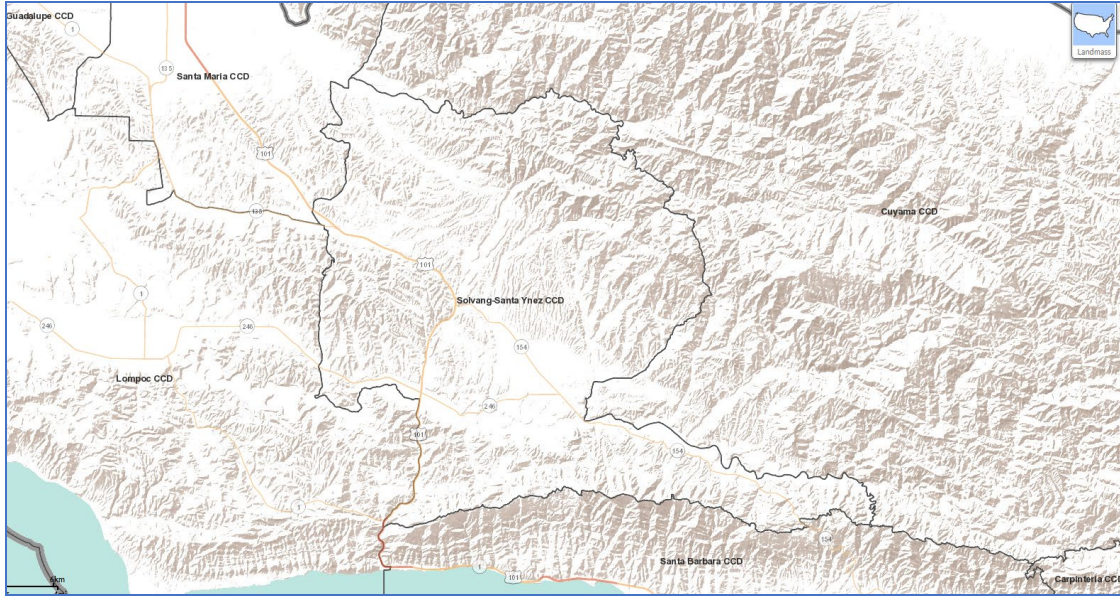
Percent of Countywide Population, 2010



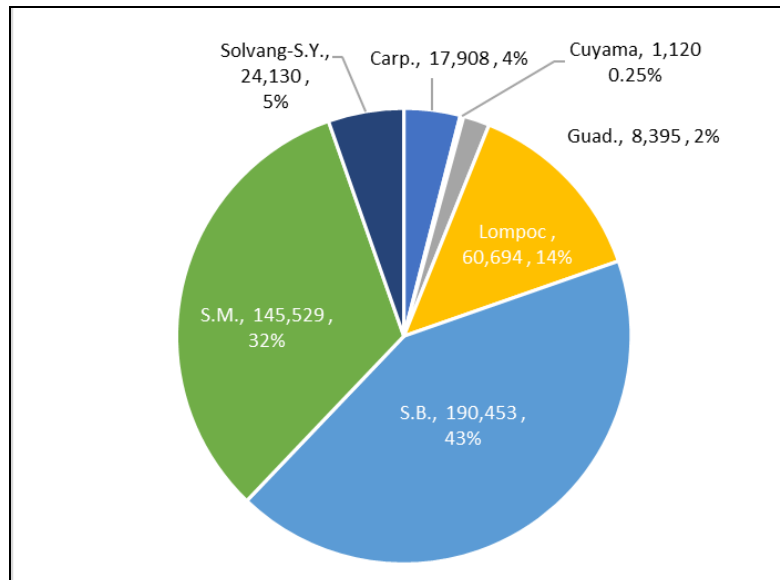
Census County Divisions

Census County Divisions (CCD's) disaggregate the county into regions that include both incorporated and unincorporated areas. The CCD's include Guadalupe, Santa Maria, Santa Ynez, Lompoc, Santa Barbara and Carpinteria. The Santa Barbara CCD has the largest population share with 43 percent or 190,453 persons. CCD's can be combined to represent the North County and South Coast (Gaviota to Ventura County line) population. The North County share of countywide population is 54 percent or 239,868, increasing from 52 percent in 2010.

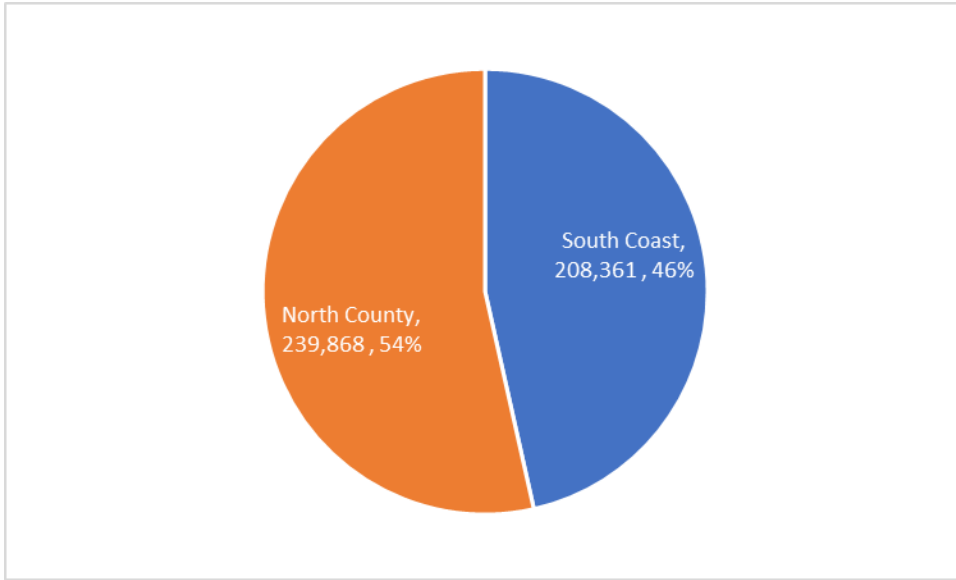
Census County Divisions



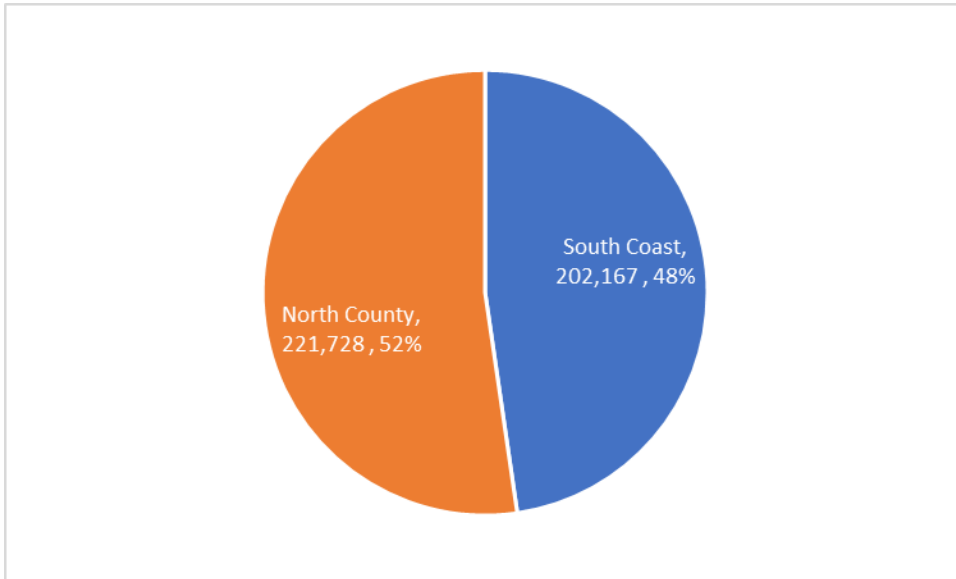
Census County Division Population



South Coast, North County Population Distribution, 2020



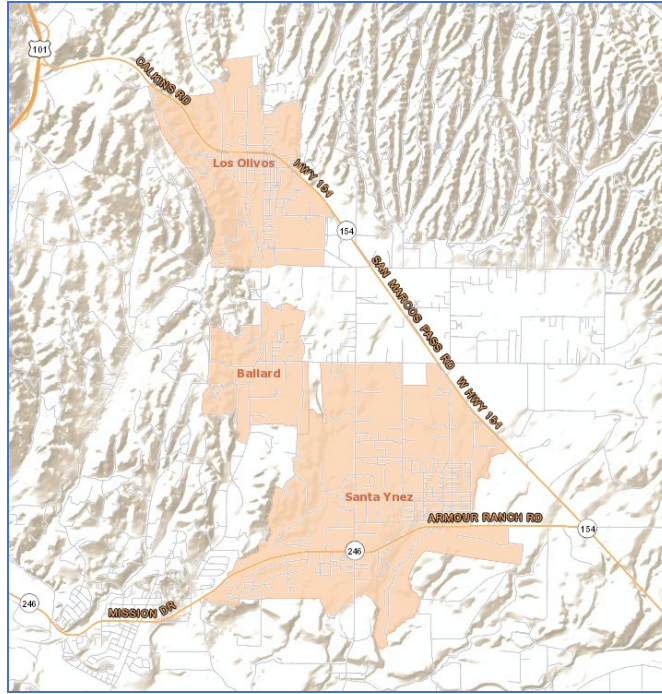
South Coast, North County Population Distribution, 2010



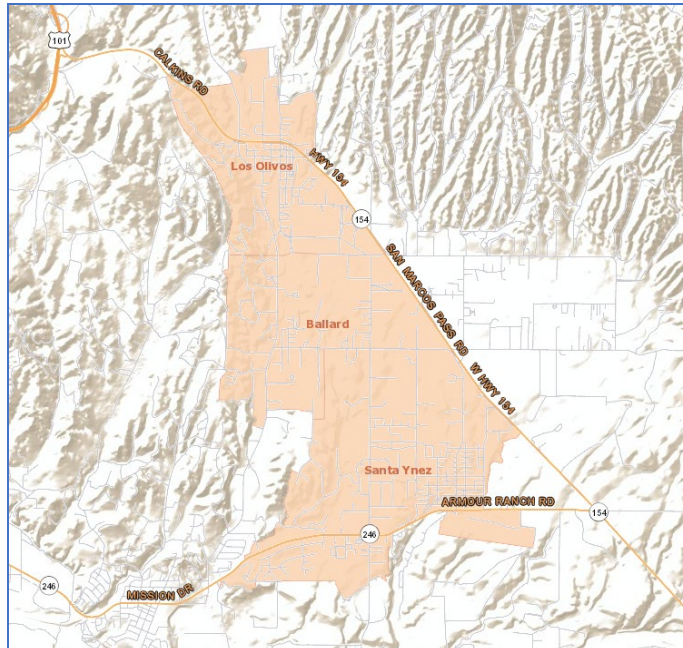
Census Designated Places

Census Designated Places (CDPs) include unincorporated named places (in addition to incorporated cities). There have been a few modifications for the 2020 Census and include the addition of Eastern Goleta Valley, the splitting of Isla Vista (included UCSB in 2010) into two separate CDPs of Isla Vista and UCSB, and some boundary changes for Toro Canyon, Orcutt and Ballard.

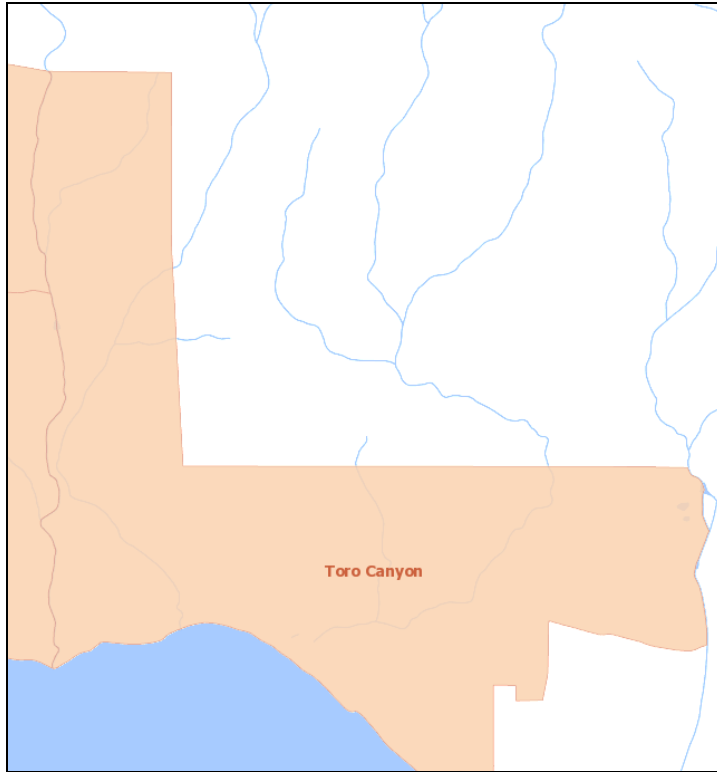
2010 Santa Ynez Valley CDP



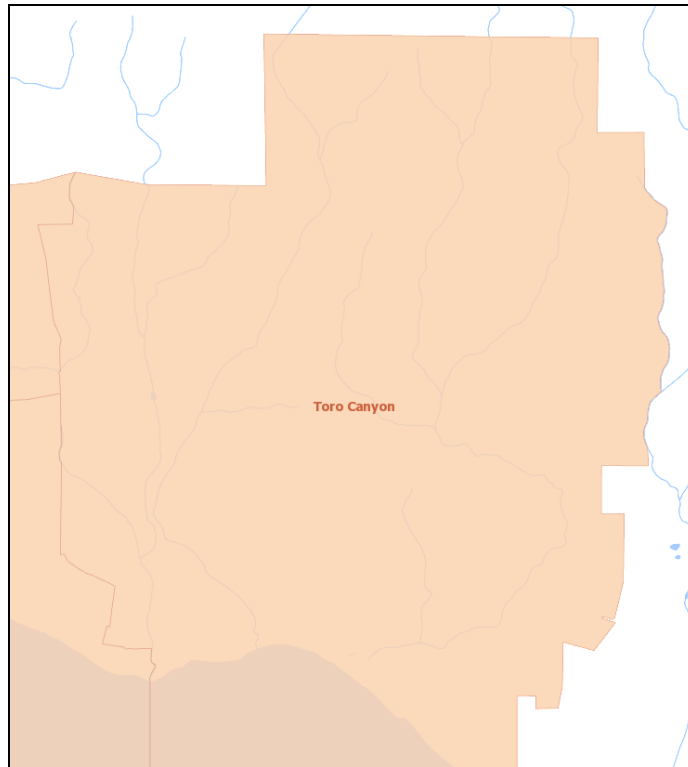
2020 Santa Ynez Valley CDP



2010 Toro Canyon CDP



2020 Toro Canyon CDP



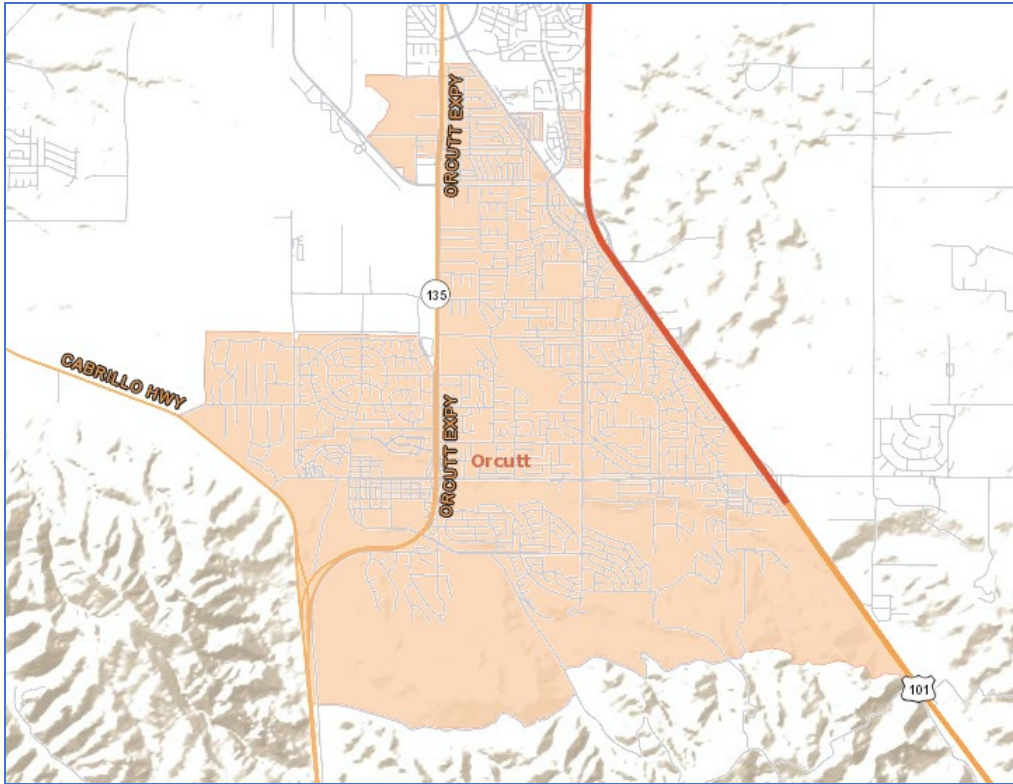
2010 Isla Vista (UCSB) CDP



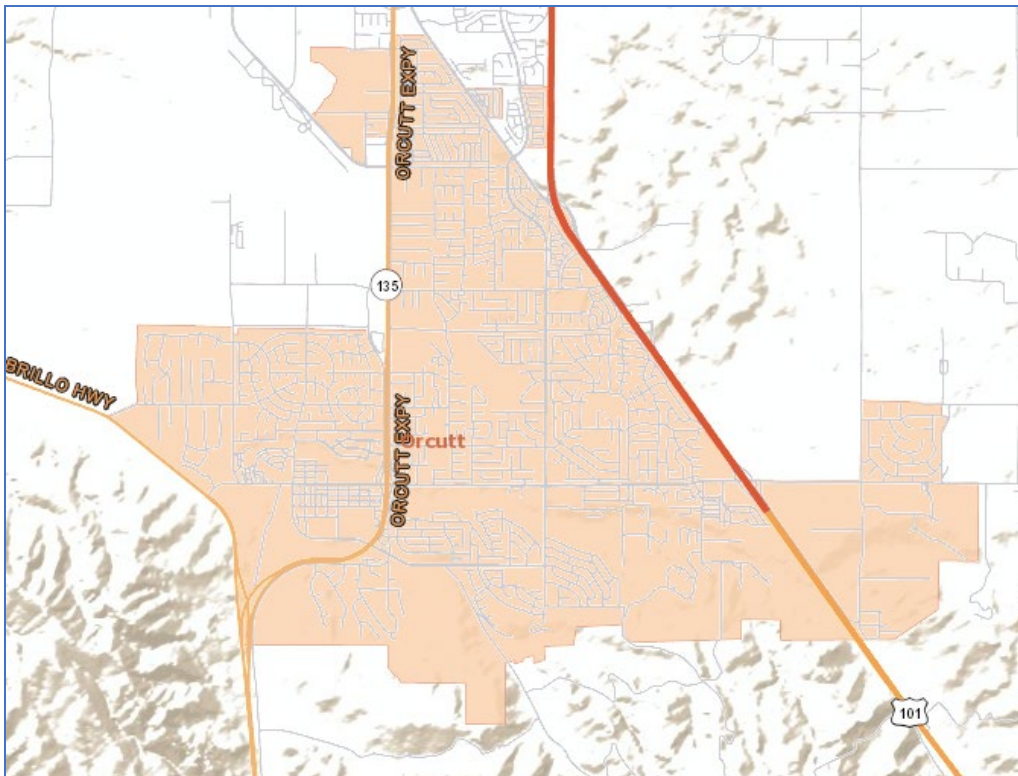
2020 Isla Vista, UCSB, Eastern Goleta Valley CDP



2010 Orcutt CDP



2020 Orcutt CDP



Eastern Goleta Valley is a newly designated place resulting in the first official Census population estimate of 28,656. Isla Vista and UCSB have also been redefined for the 2020 Census resulting in separate estimates of 28,656 and 9,710 persons, respectively. The population of Orcutt increased by 3,129 persons, or 10.8 percent. The largest percentage increase occurred in the community of Ballard; however, the boundaries of the community were expanded for 2020 to include the surrounding unincorporated area. Similarly, the population of Toro Canyon increased 21.7 percent reflecting an increase in its coverage area. The communities of Summerland and Montecito experienced population declines.

Unincorporated Area Population, 2010 and 2020

	2010	2020	Change	%
Eastern Goleta Valley*		28,656		
Isla Vista*		15,500		
UCSB*		9,710		
Summerland	1,448	1,222	(226)	-15.6%
Montecito	8,965	8,638	(327)	-3.6%
Mission Canyon	2,381	2,540	159	6.7%
Toro Canyon	1,508	1,835	327	21.7%
Ballard	467	768	301	64.5%
Los Olivos	1,132	1,202	70	6.2%
Santa Ynez	4,418	4,505	87	2.0%
Casmalia	138	147	9	6.5%
Orcutt	28,905	32,034	3,129	10.8%
Garey	68	72	4	5.9%
Sisquoc	183	191	8	4.4%
Los Alamos	1,890	1,839	(51)	-2.7%
Vandenberg AFB	3,338	3,559	221	6.6%
Vandenberg Village	6,497	7,308	811	12.5%
Mission Hills	3,576	3,571	(5)	-0.1%
Cuyama	57	37	(20)	-35.1%
New Cuyama	517	542	25	4.8%

*New Census places

Housing Units

The largest increase in housing units between 2010 and 2020 occurred in The City of Santa Maria with 1,666 new units followed by the City of Goleta with 1,170 new units. The largest percentage increase of 12.3 percent occurred in the City of Guadalupe. Montecito and Summerland both experienced a decline in the number of housing units. The housing unit estimate for UCSB is 898 units. This does not include dormitories as they are considered group quarters and not housing units.

Housing Units, 2010 and 2020

	2010	2020	Change	%
Carpinteria	5,429	5,689	260	4.8%
Santa Barbara	37,820	38,208	388	1.0%
Goleta	11,473	12,643	1,170	10.2%
Buellton	1,845	2,030	185	10.0%
Solvang	2,485	2,621	136	5.5%
Guadalupe	1,887	2,119	232	12.3%
Lompoc	14,416	14,609	193	1.3%
Santa Maria	28,294	29,960	1,666	5.9%
Eastern Goleta Valley*		10,684		
Isla Vista*		4,665		
UCSB*		898		
Summerland	823	740	(83)	-10.1%
Montecito	4,238	4,162	(76)	-1.8%
Mission Canyon	1,075	1,122	47	4.4%
Toro Canyon	804	1,026	222	27.6%
Ballard	188	347	159	84.6%
Los Olivos	509	474	(35)	-6.9%
Santa Ynez	1,886	1,863	(23)	-1.2%
Casmalia	61	53	(8)	-13.1%
Orcutt	11,133	11,928	795	7.1%
Garey	29	33	4	13.8%
Sisquoc	73	76	3	4.1%
Los Alamos	681	676	(5)	-0.7%
Vandenberg AFB	1,035	996	(39)	-3.8%
Vandenberg Village	2,707	2,854	147	5.4%
Mission Hills	1,223	1,226	3	0.2%
Cuyama	30	20	(10)	-33.3%
New Cuyama	215	222	7	3.3%
Santa Barbara County	152,834	158,279	5,445	3.6%

*New Census places

Vacant Units

The vacant unit estimates include seasonal and vacation units that are not for sale or rent to long term tenants. Short term vacation rentals and second homes are considered vacant units. Due to the additional vacant unit categories rates are higher than one might anticipate. Data for these additional vacancy categories have not been released at this time.

Vacant Units, 2010 and 2020

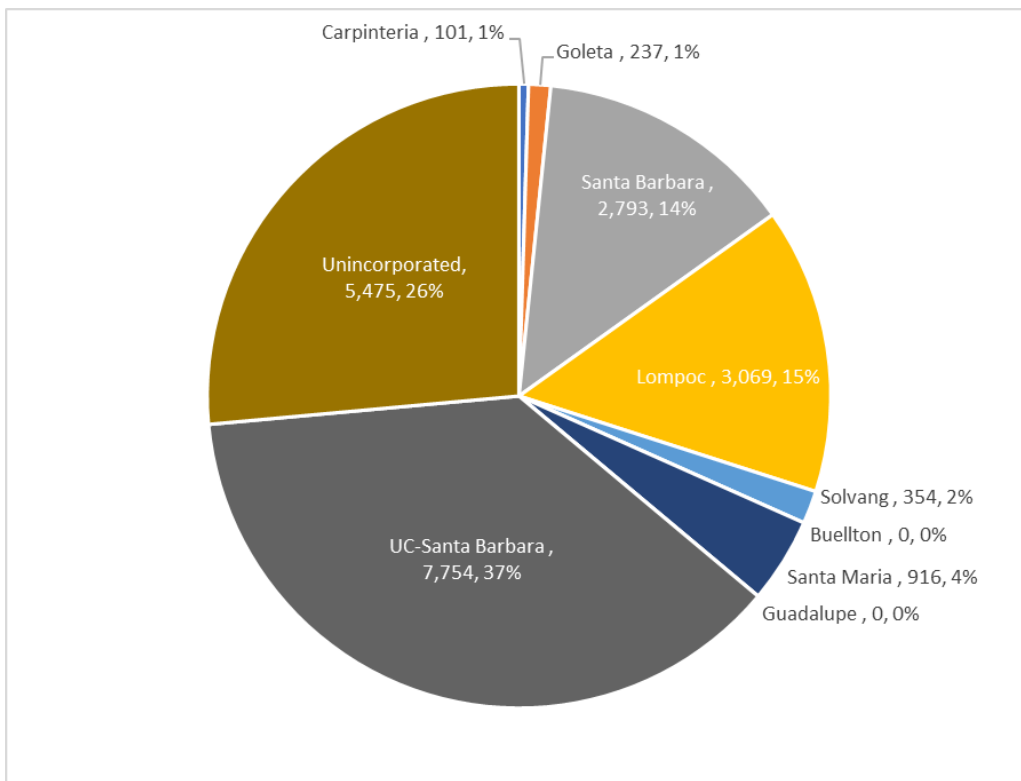
	2010	%	2020	%
Carpinteria	670	12.3%	721	12.7%
Santa Barbara	2,371	6.3%	2,825	7.4%
Goleta	570	5.0%	614	4.9%
Buellton	84	4.6%	87	4.3%
Solvang	312	12.6%	158	6.0%
Guadalupe	77	4.1%	56	2.6%
Lompoc	1,061	7.4%	505	3.5%
Santa Maria	1,386	4.9%	1,016	3.4%
Eastern Goleta Valley*			476	4.5%
Isla Vista*			200	4.3%
UCSB *			28	3.1%
Summerland	136	16.5%	153	20.7%
Montecito	806	19.0%	1,005	24.1%
Mission Canyon	55	5.1%	81	7.2%
Toro Canyon	184	22.9%	259	25.2%
Ballard	23	12.2%	43	12.4%
Los Olivos	49	9.6%	52	11.0%
Santa Ynez	145	7.7%	101	5.4%
Casmalia	4	6.6%	7	13.2%
Orcutt	502	4.5%	336	2.8%
Garey	1	3.4%	6	18.2%
Sisquoc	4	5.5%	4	5.3%
Los Alamos	53	7.8%	32	4.7%
Vandenberg AFB	177	17.1%	17	1.7%
Vandenberg Village	156	5.8%	128	4.5%
Mission Hills	41	3.4%	42	3.4%
Cuyama	10	33.3%	6	30.0%
New Cuyama	38	17.7%	22	9.9%
Santa Barbara County	10,588	6.9%	9,926	6.3%

*New Census places

Group Quarters Population

Group quarters are defined as unrelated individuals living in a facility that provides services, dormitories for example. Group quarters are singled out because they do not represent housing units, but the residents are counted as part of the overall population. Countywide, there are 20,699 persons residing in group quarters. UCSB has the largest countywide proportion and number of group quarters population with 37 percent or 7,754 persons. Group quarters in the City of Santa Barbara increased by 1,166 persons or 72 percent. The City of Lompoc (including the correctional facility) accounts for 15 percent of countywide group quarters, however, the city experienced a decrease of 587 or -16 percent between 2010 and 2010. On a percentage basis the City of Carpinteria and Solvang increased significantly in group quarters population.

Countywide Group Quarters Population, 2020



Group Quarters Population, 2010 and 2020

	2010 Group Quarters Population	2020 Group Quarters Population	Change Change	% Change
Carpinteria	19	101	82	432%
Santa Barbara	1,627	2,793	1,166	72%
Goleta	201	237	36	18%
Buellton	-	-	-	
Solvang	55	354	299	544%
Guadalupe	-	-	-	
Lompoc	3,656	3,069	(587)	-16%
Santa Maria	1,007	916	(91)	-9%
Eastern Goleta Valley *	-	992		
Isla Vista *	-	1,724		
UC-Santa Barbara *	-	7,754		
Summerland	-	-	-	
Montecito	932	1,148	216	23%
Mission Canyon	9	-	(9)	-100%
Toro Canyon	-	17	17	
Ballard	-	-	-	
Los Olivos	-	78	78	
Santa Ynez	-	59	59	
Casmalia	-	-	-	
Orcutt	113	134	21	19%
Garey	-	-	-	
Sisquoc	-	-	-	
Los Alamos	-	17	17	
Vandenberg AFB	386	373	(13)	-3%
Vandenberg Village	19	20	1	5%
Mission Hills	-	-	-	
Cuyama	-	-	-	
New Cuyama	-	-	-	
Santa Barbara County	17,782	20,699	2,917	16%

*New Census Places

Household Size

Household size is the average of persons living in a housing unit. It does not include vacant units as these are not considered households. The countywide household size average is 2.88, an increase of 0.02 between 2010 and 2020. The City of Guadalupe has the highest household size in the county with 3.91 followed by the City of Santa Maria with a household size of 3.76. The City of Santa Maria has experienced one of the largest increases since 2010. The South Coast and Santa Ynez Valley cities have experienced a decline in household size in contrast to the cities of Lompoc, Guadalupe and Santa Maria which experienced similar if not higher household sizes between 2010 and 2020.

Household Size, 2010, 2020

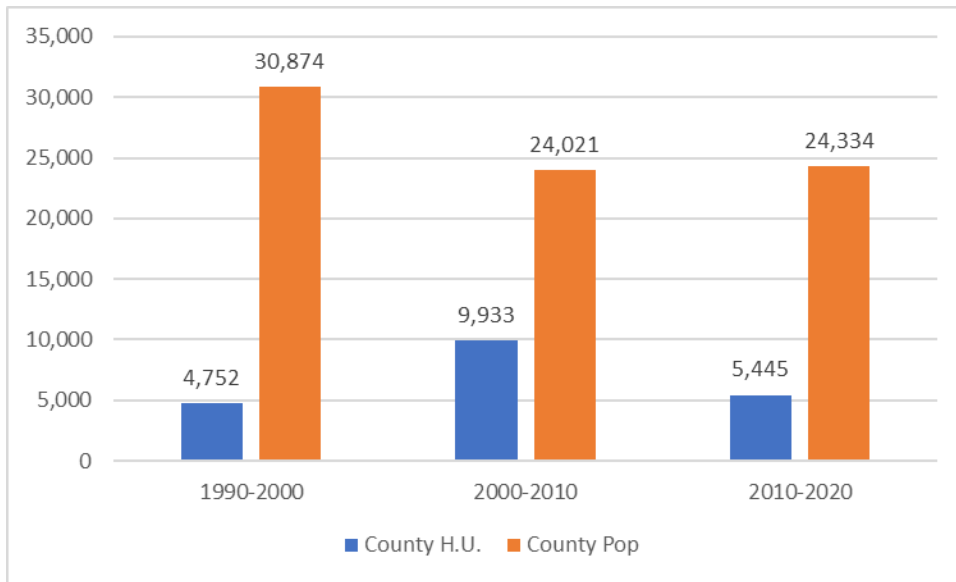
	2010	2020	Change
Carpinteria	2.74	2.65	-0.09
Santa Barbara	2.45	2.43	-0.02
Goleta	2.72	2.70	-0.02
Buellton	2.74	2.66	-0.08
Solvang	2.39	2.34	-0.05
Guadalupe	3.91	3.91	0.00
Lompoc	2.90	2.93	0.03
Santa Maria	3.66	3.76	0.10
Eastern Goleta Valley*		2.71	
Isla Vista*		3.09	
UCSB*		2.25	
Summerland	2.11	2.08	-0.03
Montecito	2.34	2.37	0.03
Mission Canyon	2.33	2.44	0.11
Toro Canyon	2.43	2.37	-0.06
Ballard	2.83	2.53	-0.30
Los Olivos	2.46	2.66	0.20
Santa Ynez	2.54	2.52	-0.02
Casmalia	2.42	3.20	0.78
Orcutt	2.71	2.75	0.04
Garey	2.43	2.67	0.24
Sisquoc	2.65	2.65	0.00
Los Alamos	3.01	2.83	-0.18
Vandenberg AFB	3.44	3.25	-0.19
Vandenberg Village	2.54	2.67	0.13
Mission Hills	3.03	3.02	-0.01
Cuyama	2.85	2.64	-0.21
New Cuyama	2.92	2.71	-0.21
Santa Barbara County	2.86	2.88	0.02

*New Census places

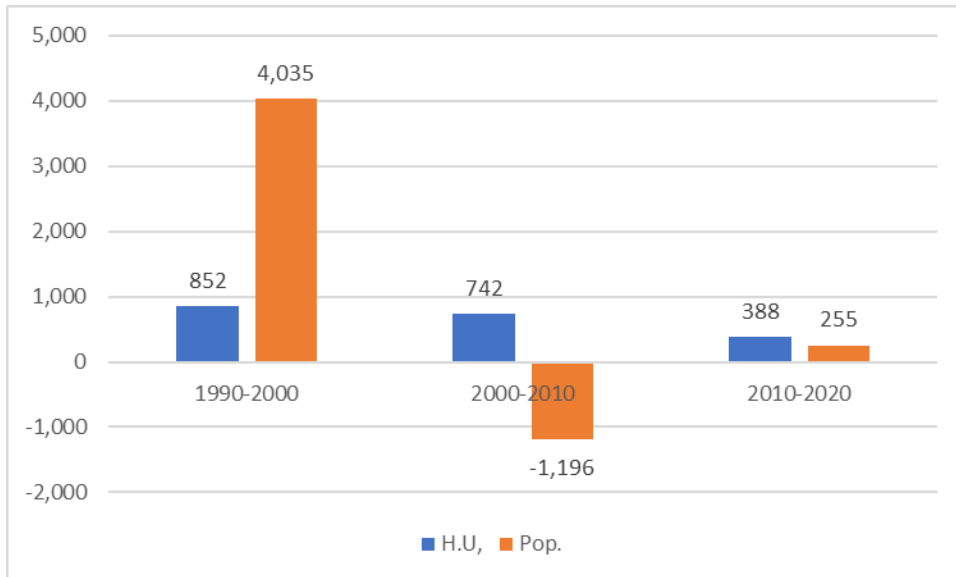
Ratio of Housing Units to Population Growth

Countywide, over the 1990 to 2000 period, 6.50 persons were added to the population for each new housing unit. Over the 2010 to 2020 period this ratio decreased to 4.5 persons. Looking at a more detailed city level, Santa Barbara has experienced lower ratios. Since 2000 and the recession, the city had experienced negative population growth, and more recently since 2010 only marginal population growth relative to housing unit growth. As a result, the City of Santa Barbara's household size is decreasing as highlighted in the previous section. The City of Santa Maria has continued to see higher ratios of population to housing unit growth and increases in household size.

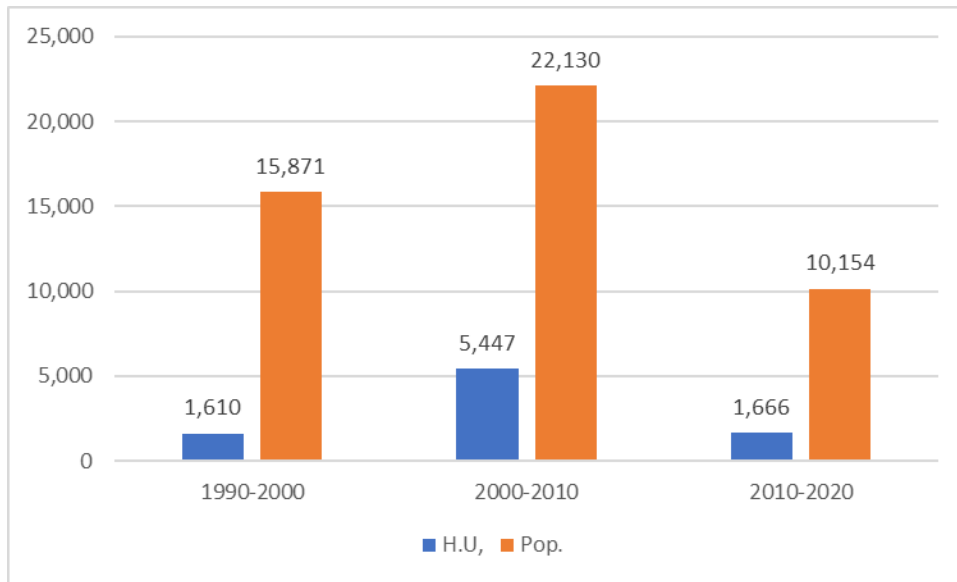
Change in County Population and Housing Units



Change in City of Santa Barbara Population and Housing Units



Change in City of Santa Maria Population and Housing Units



Ratio of Population-to-Housing Unit Growth

	1990-2000	2000-2010	2010-2020
Santa Barbara County	6.50	2.42	4.47
City of Santa Maria	9.86	4.06	6.09
City of Santa Barbara	4.74	-1.61	0.66

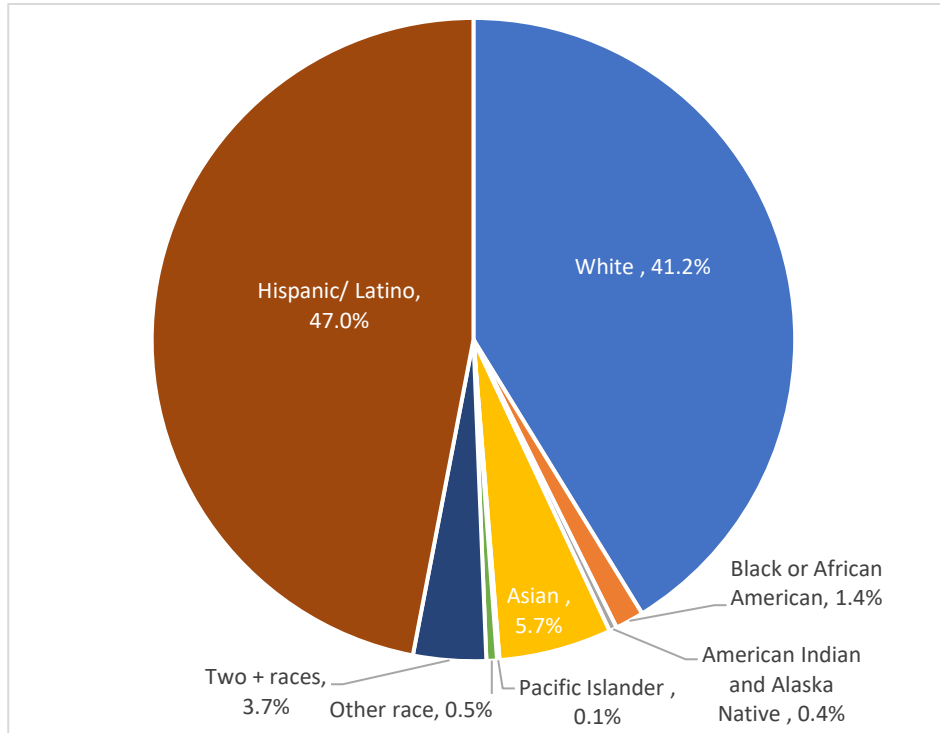
Race and Hispanic Origin

The countywide proportion of the Hispanic/Latino population in 2020 is 47 percent, an increase of 4.1 percent from 2010. The White, non-Hispanic proportion of the population in 2020 is 41.2 percent, a decrease of 6.7 percent from 2010. The Asian racial group is the third largest countywide with 5.7 percent, increasing from 4.6 percent in 2010

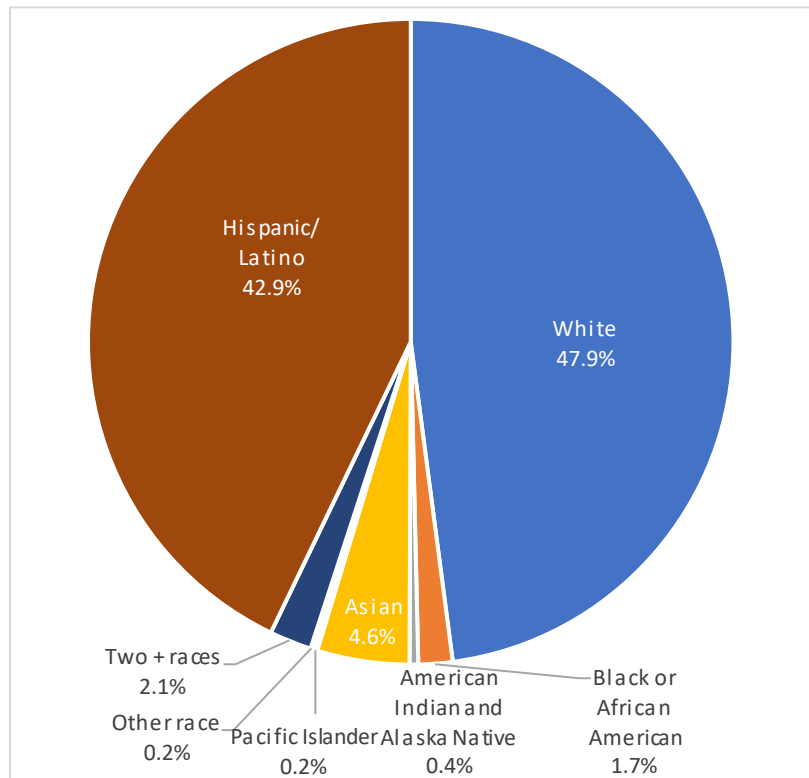
The American Indian and Alaska Native race category is most concentrated within the Santa Ynez Reservation. Of the 264 persons in the reservation, 173 persons or 65.5 percent fall into the American Indian racial group. Vandenberg AFB has the highest proportion of Black or African American persons with 8.8 percent followed by the City of Lompoc with 4.1 percent. UCSB, the City of Goleta, and Isla Vista have the highest proportions of the Asian race group with 37.7, 12.0, and 20.7 percent, respectively.

The City of Santa Maria and Guadalupe have the highest proportion of Hispanic/Latino persons with 76.5 and 88.1 percent, respectively. The community of Montecito has the lowest proportion of Hispanic/Latino persons with 8.2 percent.

Countywide Race and Hispanic Origin, 2020



Countywide Race and Hispanic Origin, 2010



Non-Hispanic Racial Groups (%), 2010 and 2020

	White		Black or African American		American Indian and Alaska Native		Asian		Pacific Islander		Other race		Two races	
	2010	2020	2010	2020	2010	2020	2010	2020	2010	2020	2010	2020	2010	2020
Santa Barbara County	47.9%	41.2%	1.7%	1.4%	0.4%	0.4%	4.6%	5.7%	0.2%	0.1%	0.2%	0.5%	2.1%	3.7%
Santa Barbara	54.8%	51.7%	1.3%	1.2%	0.4%	0.3%	3.3%	3.4%	0.1%	0.1%	0.2%	0.6%	1.9%	3.8%
Carpinteria	46.6%	44.3%	0.6%	0.6%	0.3%	0.3%	2.2%	2.3%	0.1%	0.1%	0.1%	0.5%	1.3%	3.3%
Goleta	53.6%	46.1%	1.3%	1.4%	0.3%	0.2%	9.0%	12.0%	0.1%	0.0%	0.2%	0.5%	2.6%	4.4%
Lompoc	36.3%	29.9%	5.2%	4.1%	0.8%	0.7%	3.5%	3.6%	0.4%	0.2%	0.2%	0.4%	2.8%	3.8%
Santa Maria	21.7%	15.3%	1.2%	1.0%	0.3%	0.3%	4.7%	4.6%	0.1%	0.1%	0.2%	0.5%	1.3%	1.8%
Guadalupe	8.8%	7.4%	0.6%	0.5%	0.2%	0.5%	2.6%	2.1%	0.1%	0.0%	0.1%	0.1%	1.3%	1.2%
Buellton	62.8%	58.9%	0.7%	0.6%	0.7%	0.5%	2.7%	2.2%	0.1%	0.1%	0.3%	0.7%	2.5%	4.5%
Solvang	66.9%	63.1%	0.6%	0.8%	0.5%	0.3%	1.3%	1.8%	0.0%	0.0%	0.0%	0.4%	1.5%	3.6%
Ballard	86.1%	74.0%	0.6%	1.0%	0.0%	0.3%	0.4%	0.5%	0.0%	0.3%	0.2%	0.5%	2.8%	3.4%
Casmalia	53.6%	49.7%	2.2%	0.0%	0.0%	0.0%	0.7%	0.7%	0.0%	0.0%	0.0%	0.0%	1.4%	6.8%
Cuyama	26.3%	37.8%	0.0%	0.0%	3.5%	2.7%	0.0%	0.0%	0.0%	2.7%	0.0%	0.0%	0.0%	10.8%
Eastern Goleta Valley *		61.6%		0.7%		0.3%		6.0%		0.2%		0.6%		4.6%
Garey	60.3%	62.5%	0.0%	0.0%	0.0%	1.4%	0.0%	1.4%	0.0%	0.0%	0.0%	1.4%	8.8%	8.3%
Isla Vista*		42.0%		2.0%		0.1%		20.7%		0.1%		0.9%		6.8%
Los Alamos	55.9%	43.5%	0.2%	0.4%	0.2%	1.3%	1.7%	1.1%	0.0%	0.0%	0.0%	0.4%	1.1%	2.8%
Los Olivos	86.2%	78.2%	0.1%	0.0%	0.2%	0.4%	1.1%	0.6%	0.4%	0.0%	0.2%	1.0%	0.9%	3.1%
Mission Canyon	86.6%	81.8%	0.6%	0.3%	0.2%	0.1%	1.6%	2.3%	0.5%	0.0%	0.2%	0.3%	2.0%	3.7%
Mission Hills	58.4%	53.4%	2.4%	2.5%	0.8%	0.5%	3.4%	3.2%	0.3%	0.3%	0.1%	0.2%	2.9%	6.0%
Montecito	88.0%	83.5%	0.5%	0.6%	0.4%	0.3%	2.4%	2.4%	0.1%	0.2%	0.2%	0.5%	1.7%	4.2%
New Cuyama	51.8%	32.8%	0.6%	0.4%	0.4%	1.1%	0.6%	0.2%	0.0%	0.0%	0.0%	0.0%	1.4%	3.7%
Orcutt	68.0%	56.0%	1.3%	1.1%	0.6%	0.5%	3.5%	3.6%	0.2%	0.2%	0.1%	0.4%	2.5%	5.2%
Santa Ynez	78.5%	76.2%	0.2%	0.7%	3.5%	0.9%	1.1%	1.2%	0.1%	0.0%	0.2%	0.5%	2.0%	4.2%
Sisquoc	59.6%	58.1%	0.0%	0.0%	1.6%	1.6%	1.6%	1.6%	0.0%	0.0%	0.0%	1.6%	5.5%	7.3%
Summerland	80.8%	78.1%	0.2%	0.5%	0.4%	0.5%	2.8%	2.9%	0.0%	0.3%	0.5%	0.2%	2.0%	4.3%
Toro Canyon	77.9%	73.1%	0.5%	0.9%	0.0%	0.0%	0.9%	2.3%	0.1%	0.1%	0.3%	0.7%	0.9%	4.0%
U.C.-Santa Barbara *		37.7%		1.2%		0.0%		37.7%		0.0%		0.7%		3.5%
Vandenberg AFB	60.1%	52.0%	8.5%	8.8%	0.2%	0.4%	5.9%	6.0%	0.6%	1.0%	0.3%	0.6%	5.9%	8.7%
Vandenberg Village	67.5%	58.2%	4.0%	3.4%	0.6%	0.5%	4.7%	4.1%	0.8%	0.7%	0.2%	0.7%	3.5%	6.2%

Note: *Isla Vista and UCSB combined in 2010 separated in 2020. UCSB and Eastern Goleta Valley are new for 2020.

Hispanic (%), 2010 and 2020

	Hispanic	
	2010	2020
Santa Barbara County	42.9%	47.0%
Santa Barbara	38.0%	38.7%
Carpinteria	48.7%	48.8%
Goleta	32.9%	35.3%
Lompoc	50.8%	57.3%
Santa Maria	70.4%	76.5%
Guadalupe	86.2%	88.1%
Buellton	30.1%	32.5%
Svang	29.2%	30.0%
Ballard	9.9%	20.1%
Casmalia	42.0%	42.9%
Cuyama	70.2%	45.9%
Eastern Goleta Valley *		26.0%
Garey	30.9%	25.0%
Isla Vista*		27.3%
Los Alamos	40.9%	50.5%
Los Olivos	11.0%	16.7%
Mission Canyon	8.3%	11.5%
Mission Hills	31.8%	34.0%
Montecito	6.7%	8.2%
New Cuyama	45.3%	61.8%
Orcutt	23.8%	33.0%
Santa Ynez	14.5%	16.2%
Sisquoc	31.7%	29.8%
Summerland	13.3%	13.1%
Toro Canyon	19.4%	18.9%
U.C.-Santa Barbara *		19.1%
Vandenberg AFB	18.5%	22.5%
Vandenberg Village	18.7%	26.2%

*New Census places

Urbanized Area

The Census Bureau's urban areas represent densely developed territory and encompasses residential, commercial, and other non-residential urban land uses. Proposed changes for the 2020 urban area definition include adopting a housing unit-based density (385 units/sq. mile) vs. the prior population density, reducing jump distances between dense areas from 2.5 to 1.5 miles, and eliminating low density areas between the jumps. These changes have the potential to reduce the size of urban areas as lower density areas and their population are eliminated.

The Census Bureau recognizes that some federal and state agencies use the Census Bureau's urban area classification for nonstatistical uses such as allocating program funds (FTA 5307 and 5311, for example), and implementing aspects of their programs.

Based on the recently released 2020 population data for Census places as shown on the following map, an approximation of the existing Santa Barbara Urbanized Area population is 202,700 persons. Depending on how the Census Bureau ultimately defines the 2020 urbanized areas, the boundaries will likely be contracted relative to the 2010 boundaries and represent less population in the region, potentially resulting in a population under 200,000.

Approximation of Santa Barbara Urbanized Area, 2010



2010 Urbanized Area, 2020 Population Estimate

	Population
Carpinteria	13,264
Santa Barbara	88,665
Goleta	32,690
Eastern Goleta Valley	28,656
Isla Vista	15,500
UCSB	9,710
Summerland	1,222
Montecito	8,638
Mission Canyon	2,540
Toro Canyon	1,835
Santa Barbara Urbanized Area Total	202,720