

# Santa Barbara County Age Characteristics

August 2017



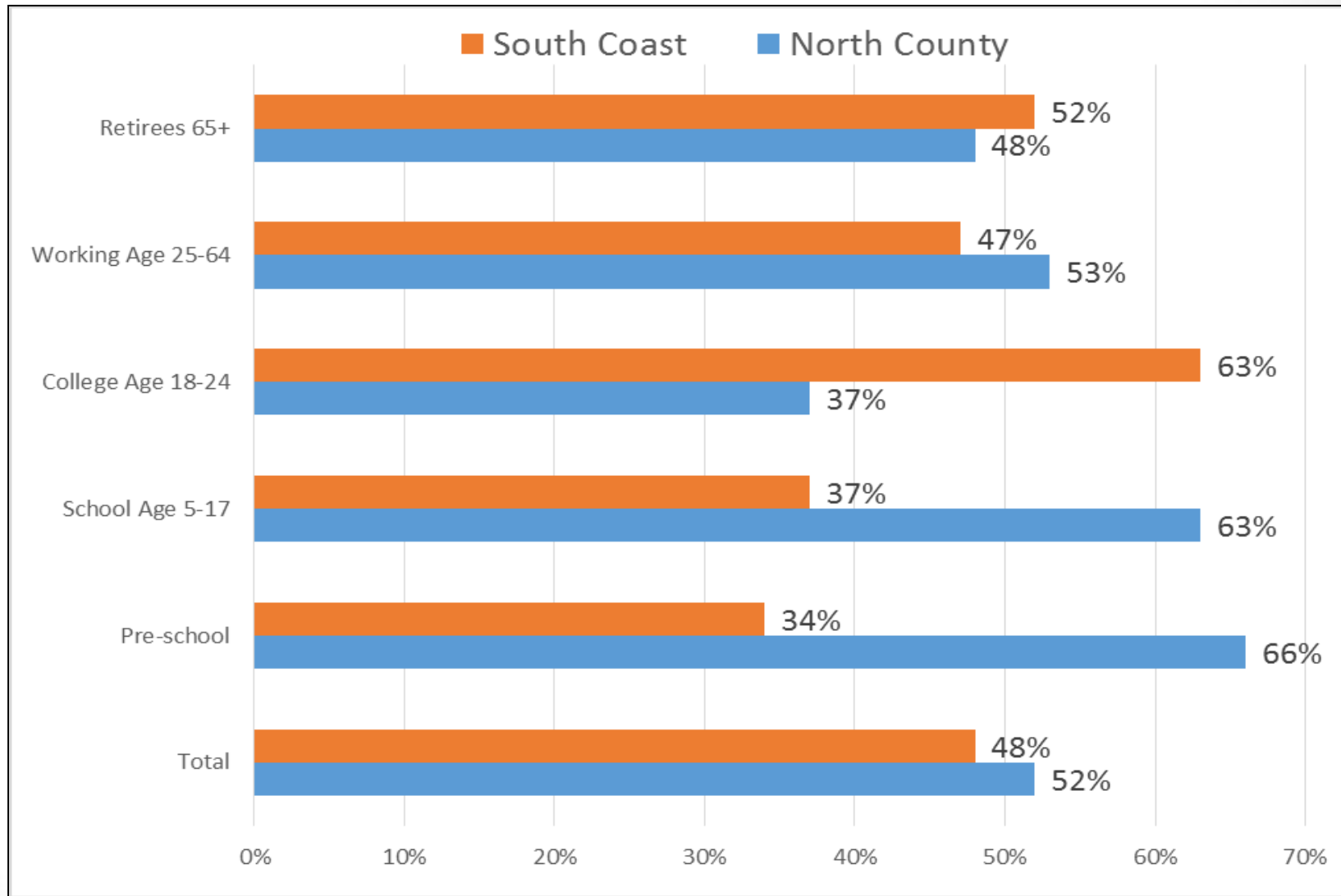
# Context

- SBCAG Census Affiliate Center-report census based.
- Resource document for service providers/others.
- Focus on aging “Baby Boomers” (1946-1964).

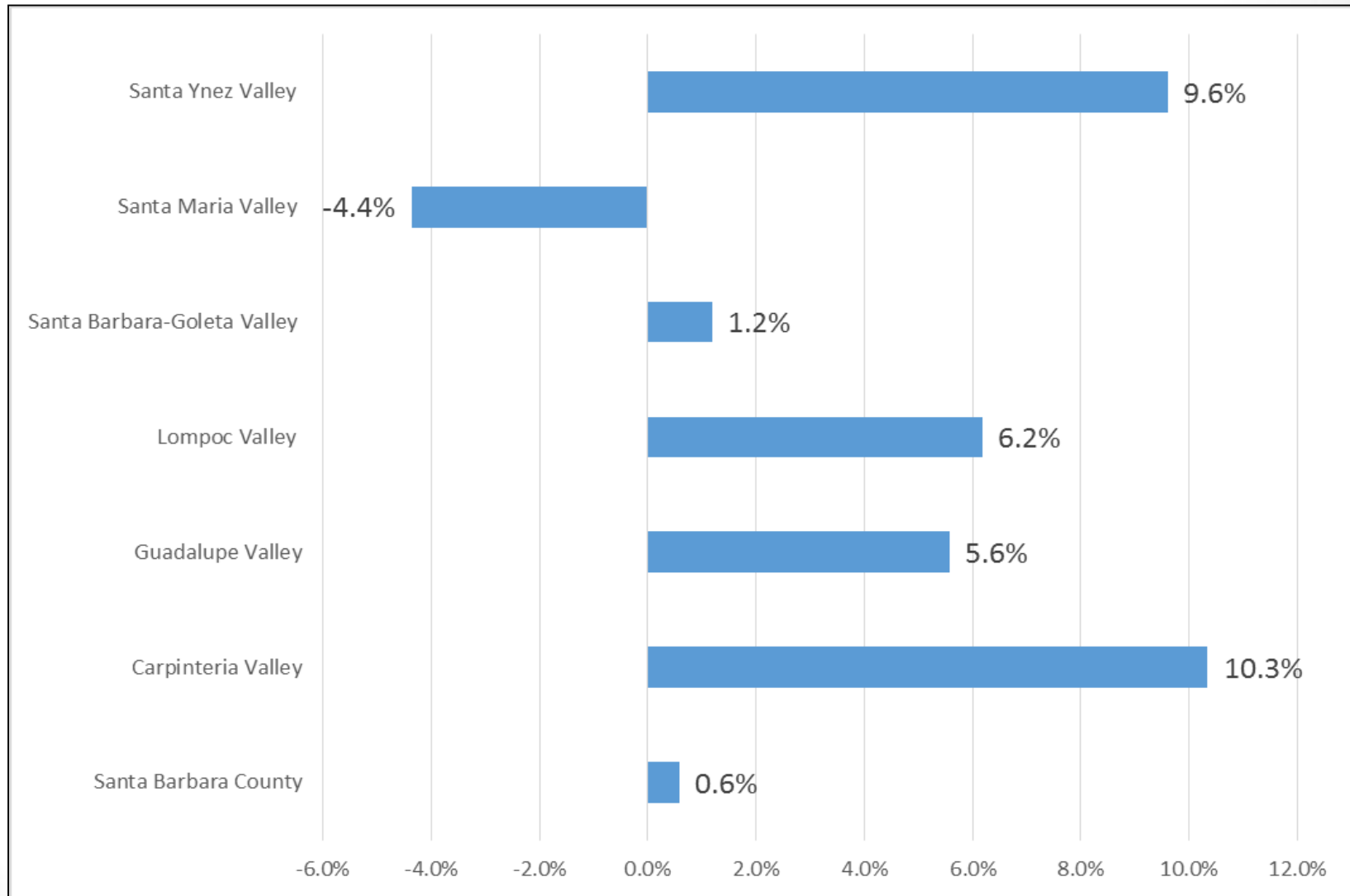
# Content

- Shows distribution and growth of the population by age group, (school, working, retirement age).
- Identifies impacts of the aging population on transportation, labor force, and housing.
- Describes demographic characteristics of older adults.

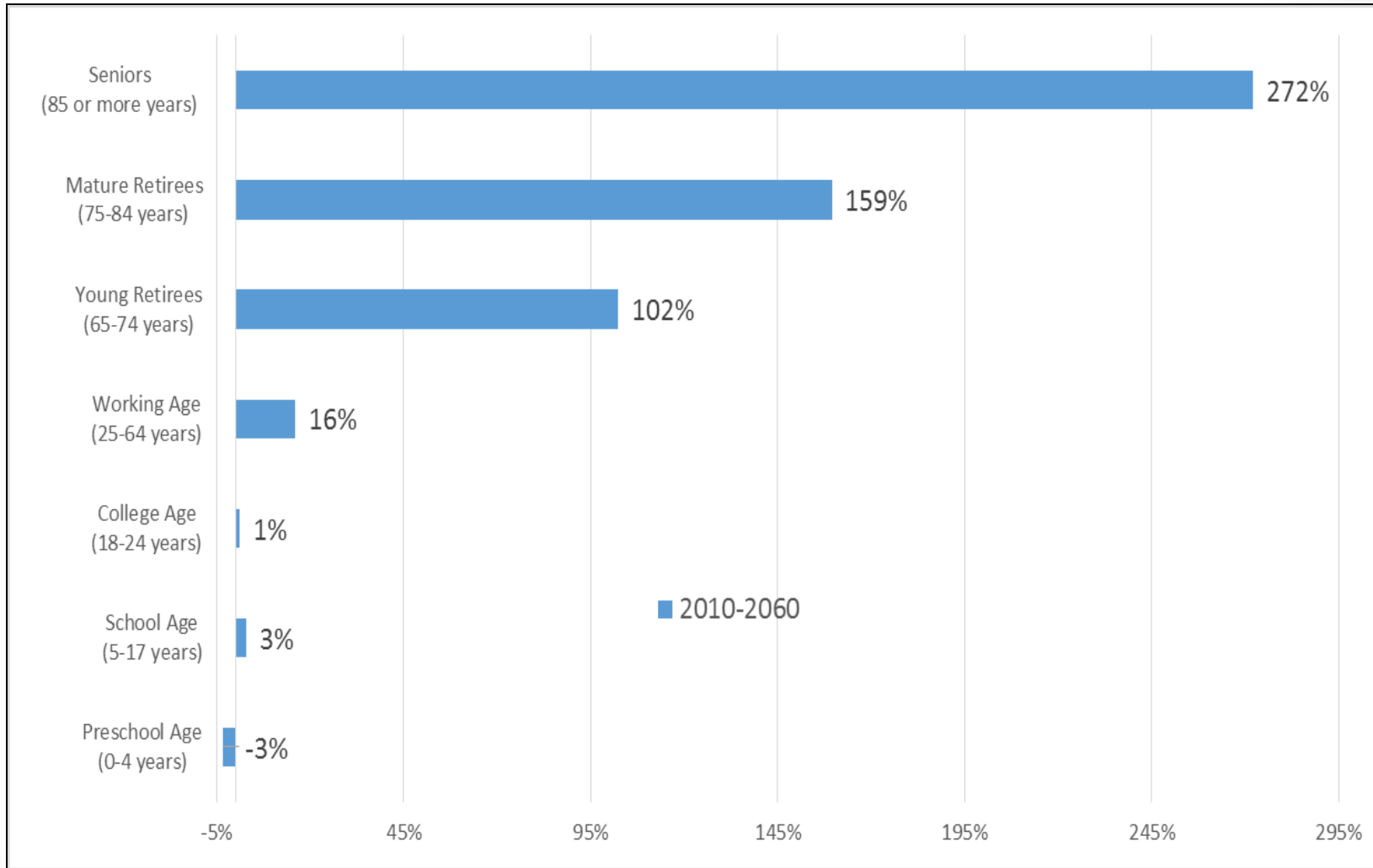
# Countywide % Age Groups for N.C., S.C. 423,900 total



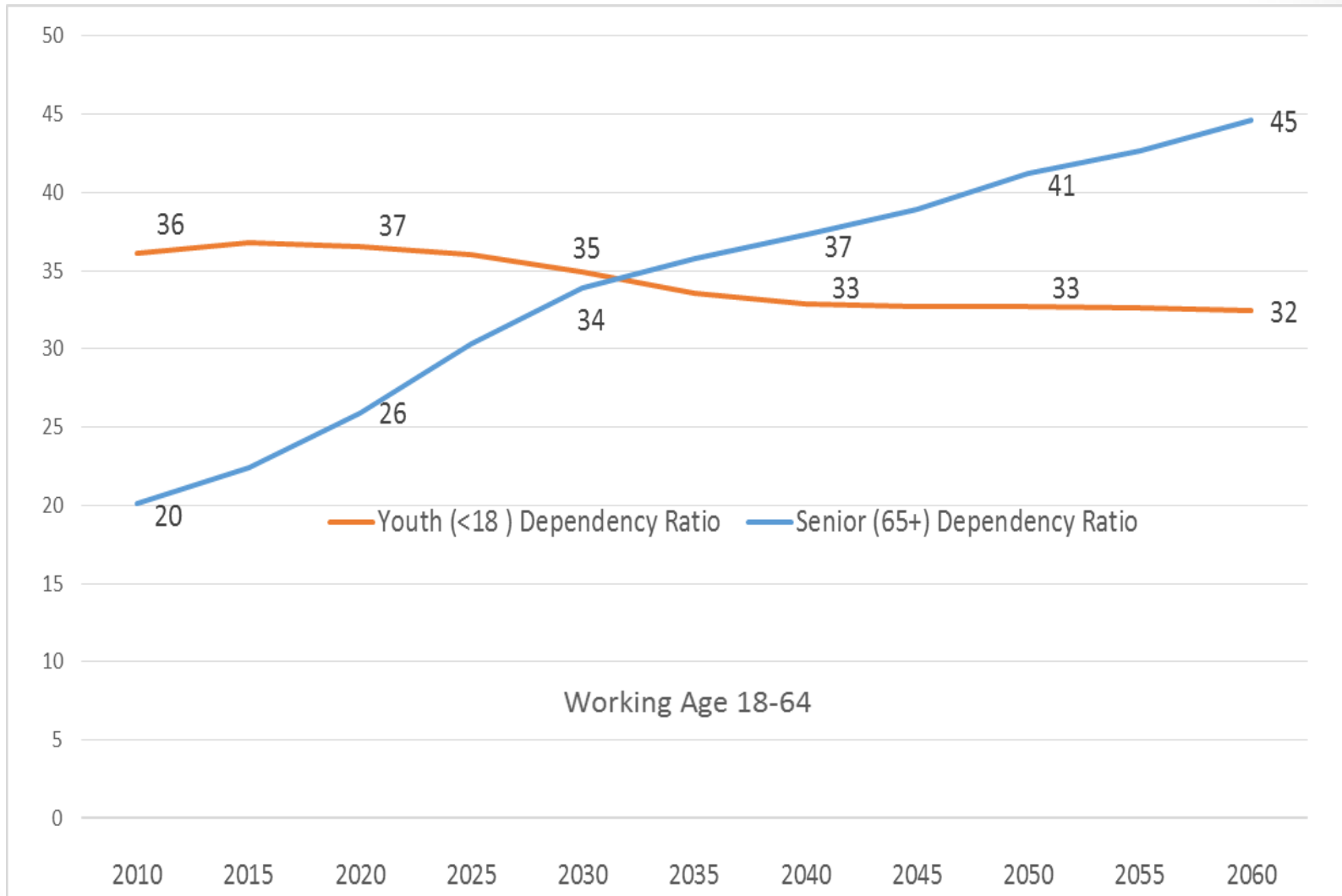
# % Change in Median Age 2000-2010



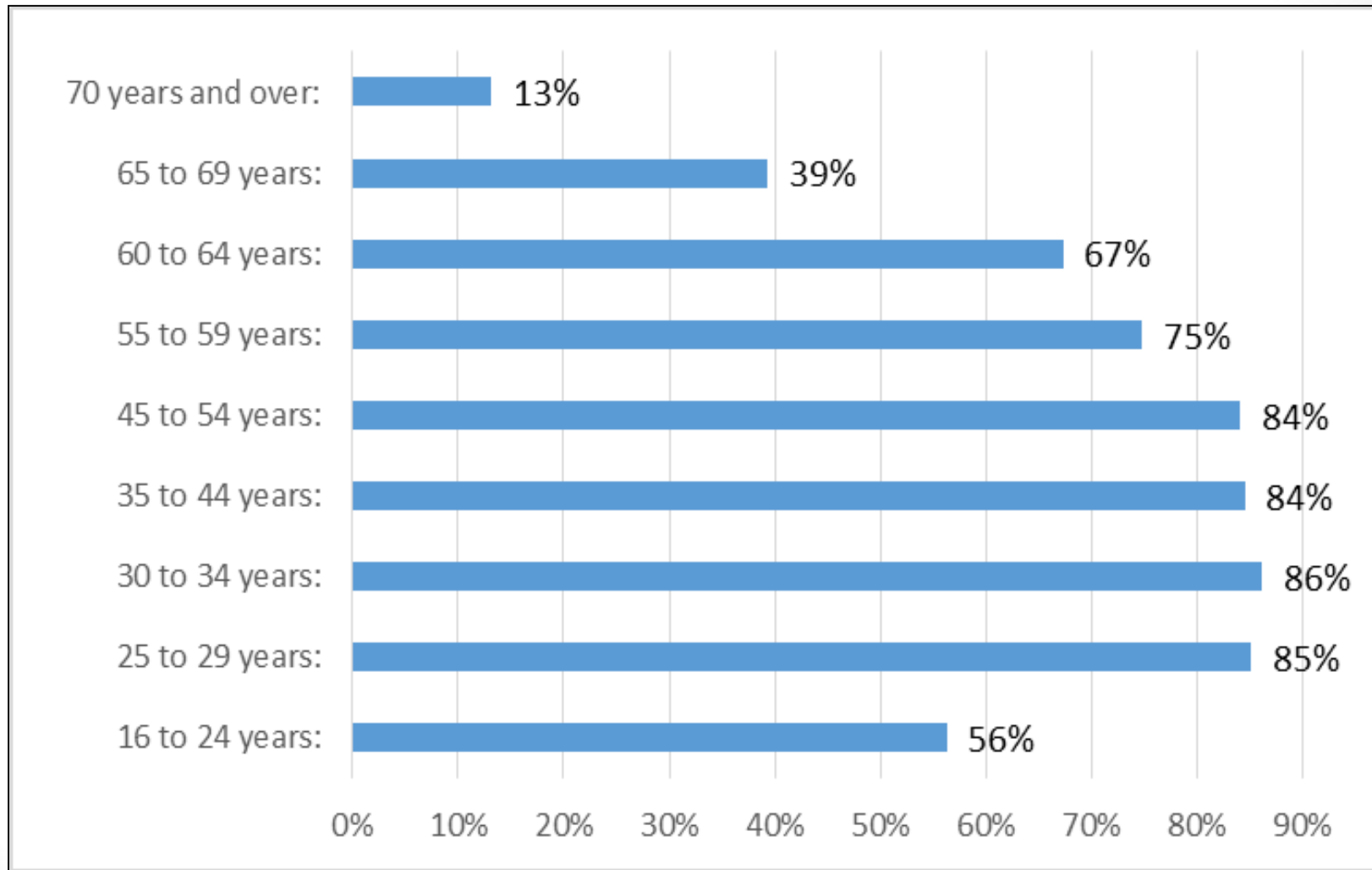
# Countywide % Change in Age Groups 2010-2060, 117,000 total pop. change, (DOF)



# Countywide Dependency Ratios, (DOF)



# South Coast Labor Participation Rate by Age, 170,500 total aged 16+

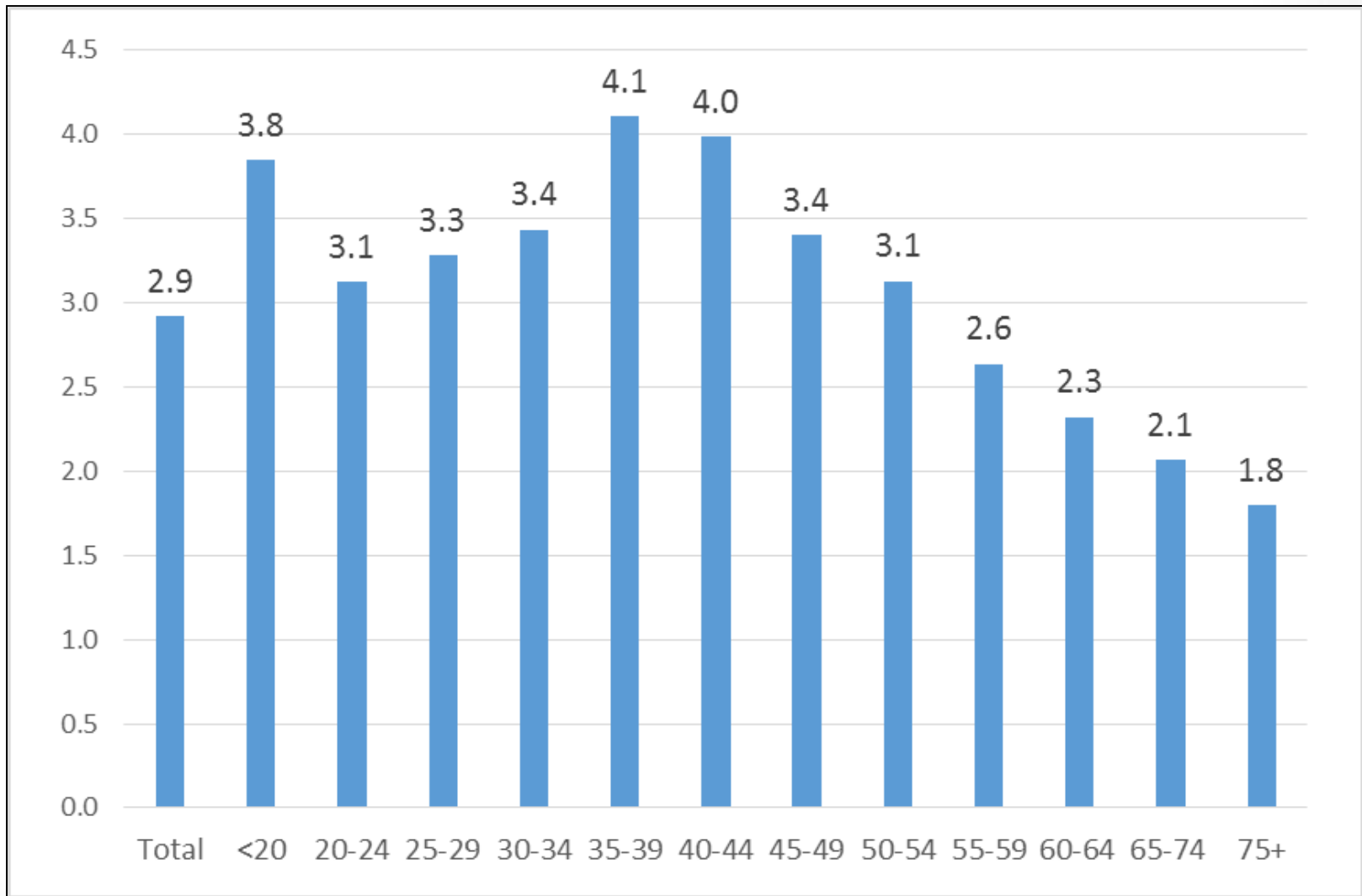




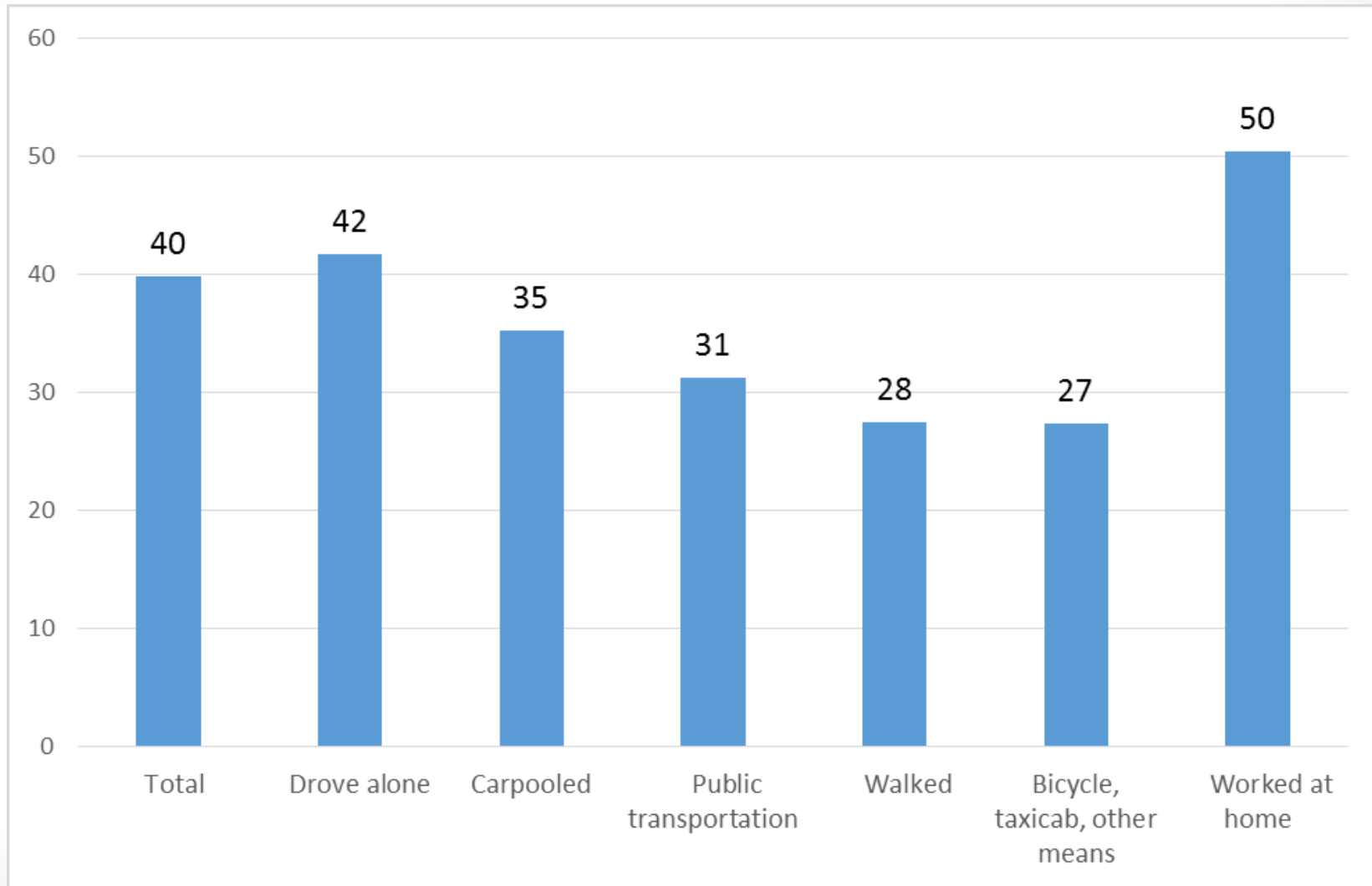
# Aging in Place, South Coast

- Workers retire and prefer to age in place.
  - Also cash out and move, etc.
- Approx. 1,400 S.C. workers over 55 drop out of labor force annually.
- Where will new replacement workers live?
  - S.C. limited expensive housing.
  - New Commuters from Ventura/N. S.B. County.
  - Replaced by younger local workers-new households.

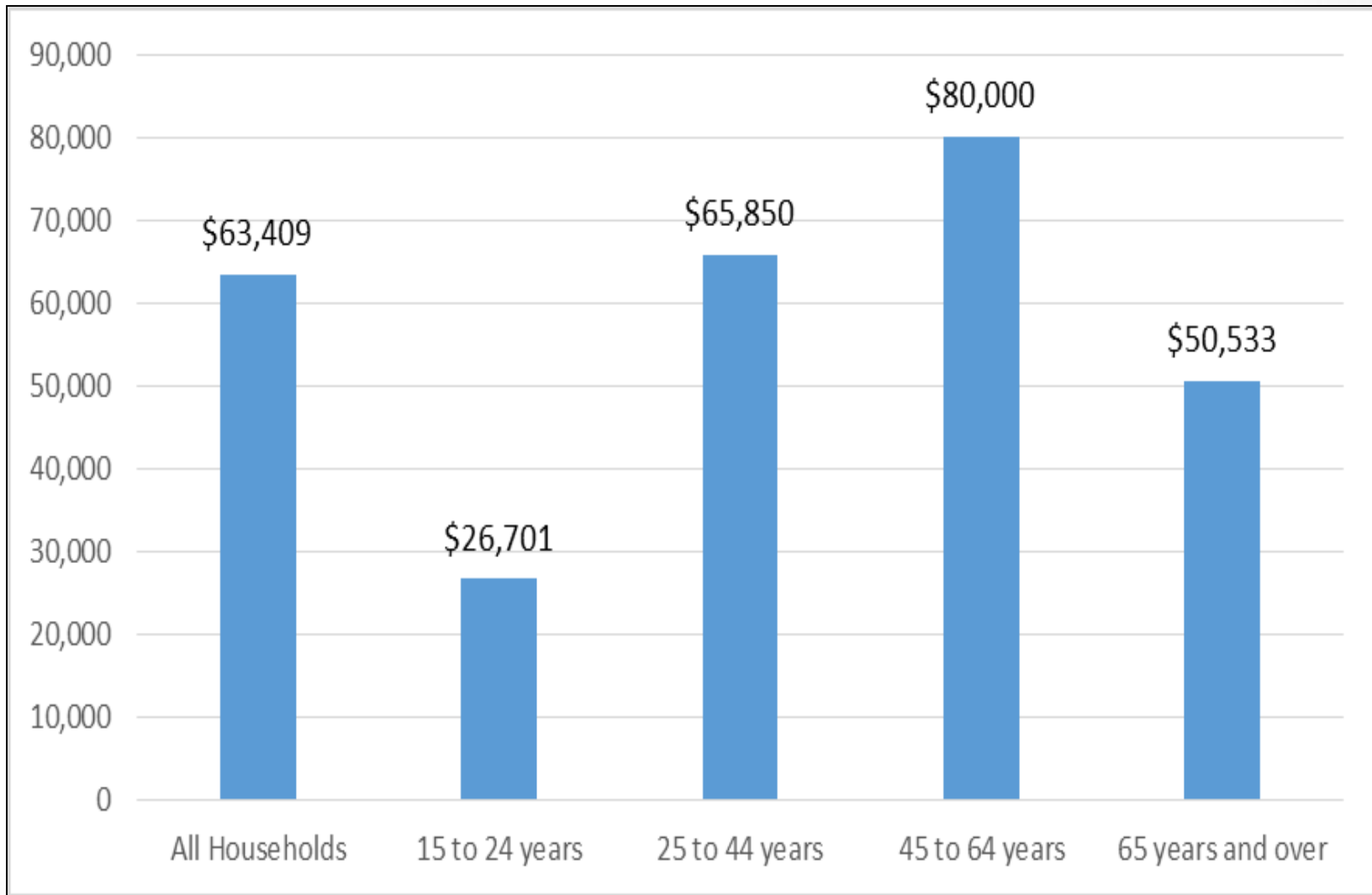
# Countywide Household Size by Age of Householder



# Countywide Med. Age by Means of Transp. to Work



# Countywide Hsld. Median Income, by Age of Hsldr.



# Demographic Characteristics Aged 60+, 75,600 total

- % Poverty Status Individuals, 5,200 total  
Countywide-7%, Guadalupe-18%
- % Speak English “not well/at all”, 6,200 total  
Countywide-8%, Guadalupe-39%
- % Hispanic, 13,700 total  
Countywide-18%, Guadalupe-79%
- % Disability, 22,800 total  
Countywide-31%, Lompoc-41%
- % Veteran Status, 16,600 total  
Countywide-22%, V. Village, Orcutt, Buellton-30%+

# Conclusion

- As “Baby Boomers” continue to retire in S.C.
  - There will be a proportionately smaller workforce.
  - Continued commuting by younger N.C. workers to S.C. jobs.
- Transportation is changing with shared economy:
  - (Uber, self-driving vehicles, e-commerce).
  - Easier to age in place.